

CHIMING OF THE HOUR

PRELUDE FOR ORGAN

Petit Canon

Nadia Boulanger (1887-1979)

A musical canon is a piece in which motifs follow one another, usually at a rhythmically strong distance. Thus, a canon seems appropriate this day, as we read of and explore the Jesus' call to and the subsequent following of him by the first disciples.

WELCOME

Pastor: May the peace of the Lord be with you.

People: And also with you.

PEALING OF THE BELL AND SILENT PRAYER OF PREPARATION

*You are our rock and our strength, O God, and in you rests our deliverance.
You defend us in the midst of adversity; you protect us from ultimate harm.
Hear now our praises as we herald your greatness. Amen.*

*** CALL TO WORSHIP**

Pastor: For God alone my soul waits in silence, for my hope is from the Lord.

People: God only is my rock and my salvation; I shall not be shaken.

Pastor: Trust in the Lord at all times, O people; pour out your heart before God.

People: Our trust is in the Lord. We worship God's name.

Pastor: Let us worship God.

*** HYMN** (see page 6)

To Those Who Knotted Nets of Twine

McKee

*** PRAYER OF THE DAY**

CHILDREN'S MESSAGE

OLD TESTAMENT LESSON

[Jonah 3:1-5,10](#)

Katy Ridley, layreader

after each reading:

Reader: The Word of the Lord. **People: Thanks be to God.**

MUSIC FOR SOLO VOICE AND ORGAN

You Walk along Our Shoreline

The Salley Gardens, arr. Benjamin Britten (1913-1976); adapt. Jacob Rivera, tenor

You walk along our shoreline where land meets unknown sea.

We hear your voice of power, "Now come and follow me.

And if you still will follow through storm and wave and shoal,
then I will make you fishers, but of the human soul."

You call us, Christ, to gather the people of the earth.

We cannot fish for only those lives we think have worth.

We spread your net of gospel across the water's face,
our boat a common shelter for all found by your grace.

We cast our net, O Jesus; we seek your promised reign;
we work for love and justice; we learn to hope through pain.

You call on us to gather God's daughters and God's sons,
to let your judgment heal us so that all may be one.

-Sylvia Dunstan, 1984; alt.

GOSPEL LESSON

[Mark 1:14-20](#)

SERMON

"More Than Casting and Mending"

Dr. Miller

* **AFFIRMATION OF FAITH** (from *A Brief Statement of Faith*)

We trust in God the Holy Spirit, everywhere the giver and renewer of life. The Spirit justifies us by grace through faith, sets us free to accept ourselves and to love God and neighbor, and binds us together with all believers in the one body of Christ, the church.

The same Spirit who inspired the prophets and apostles rules our faith and life in Christ through Scripture, engages us through the Word proclaimed, claims us in the waters of baptism, feeds us with the bread of life and the cup of salvation, and calls women and men to all ministries of the church.

THE PRAYERS OF THE PEOPLE

THE LORD'S PRAYER

Our Father, who art in heaven, hallowed be thy name. Thy kingdom come, thy will be done, on earth as it is in heaven. Give us this day our daily bread; and forgive us our debts, as we forgive our debtors; and lead us not into temptation, but deliver us from evil. For thine is the kingdom, and the power, and the glory, forever. Amen.

CALL FOR THE OFFERING ([Click here](#) or see below to give online.)

* **HYMN** (see page 7)

From the Nets of Our Labors

Hamilton

* **CHARGE AND BLESSING**

POSTLUDE FOR ORGAN

Fugue in D Minor [BWV 554/2]

attr. Johann Sebastian Bach (1685-1750)

**indicates standing for those who are able.*

Following the conclusion of the postlude, online participants will be given the opportunity to unmute themselves and to greet one another.

Welcome to Rye Presbyterian Church

If you are new to Rye Presbyterian Church, we welcome you and hope you are enriched and inspired by this time in worship. So that we may get to know you better, or if you would like more information about RPC, please go to: <https://ryepc.com/im-new/> and fill out the Welcome Form.

The chancel flowers are given to the glory of God.

In Memoriam

Martha Reynolds, on January 18, mother of Allison Reynolds.

Parish Concerns

Marge Bancel

To families with young children:

Welcome! We are glad you're here! Jesus not only welcomed children, he also blessed them. Know that your children's presence in worship is both welcomed and a blessing to us all!

Here are some ideas to help make the most out of worship as a family:

- ❖ Please make sure to register to attend worship each week so we know how many from your family will be attending.
- ❖ Bring crayons or colored pencils from home so your children can color the provided coloring pages and illustrated children's bulletins. It might also be helpful to bring a hard surface (a book or clipboard) for them to use while coloring.
- ❖ Explain what is happening during worship and what is coming next. Let children cross things off in the bulletin as they happen. Whispering is okay!
- ❖ When it's time to stand, allow children to kneel on the pews if they would like.
- ❖ Allow children to participate in the offering by putting in your envelope or putting in their own gift in the offering plates near the doors as you leave. A picture drawn for God is appropriate!

Most importantly, relax and be at peace. We know that God made children to be full of energy and excitement!

TODAY

Youth Choir Rehearsal, 11:00 a.m., via Zoom

Confirmation Class, 3:45 and 5:00 p.m., via Zoom

New Chapel Organ Demonstration, 11:10 a.m., Chapel

High School Youth Group – Vespers, 6:00 p.m., Assembly Room & via Zoom

Men's Bible Study, 8:00 p.m., via Zoom



Today...

DEMONSTRATION OF THE NEW PIPE ORGAN IN THE CHAPEL

Sundays, January 24 and 31, beginning approximately 10 minutes after the conclusion of 10:00 a.m. Worship. The program runs approximately 20 minutes, will be the same each day.

Reservation required (limited to 18).

Please email Jason Charneski (jcharneski@ryepc.com) to reserve your space.



VIRTUAL SUNDAY SCHOOL

This Sunday, January 24, we will talk about how, when we pray "Your kingdom come," we are committing to taking an active role in bringing God's transforming love and justice to the world!

All children in PreK-5th grade are welcome to join us on Sunday mornings for a small combined 30-minute class via Zoom at 9:00 a.m.! If you would like your child(ren) to participate via Zoom, please fill out the registration form on our website <https://ryepc.com/ministries/children/>.

We are also including a **Take-Home Sheet** and a **Lord's Prayer booklet** in our weekly **Christian Ed newsletter** so families can join us as we explore our belongingness and connectedness with each other, the world, and God through the Lord's Prayer! If you would like to receive these materials and are not already signed up for our weekly Christian Ed newsletter, please contact **Rev. JP** (jmarshall@ryepc.com).

THIS WEEK

Monday, January 25

9:30 a.m. Monday Morning Bible Discussion, via Zoom, contact Dan Love (dlove@ryepc.com)

7:30 p.m. Worship & Music Committee, via Zoom

Wednesday, January 27

8:30 a.m. Women's Discipleship, via Zoom – contact Alicia Baldwin (alicia.baldwin@verizon.net) or Courtney Bennett (courtneybennett91@gmail.com) for the link.

7:00 p.m. All Officers Meeting, via Zoom

Thursday, January 28

3:30 p.m. Children's Choir, via Zoom

6:30 p.m. Stephen Leaders – Prime Ministers, via Zoom

7:30 p.m. Testimony, Adult Education, via Zoom – contact John Miller (jmiller@ryepc.com)

ORDINATION AND INSTALLATION OF OFFICERS

Sunday, January 31, during 10:00 a.m. worship, in person & via Zoom

ANNUAL CONGREGATIONAL MEETING

Sunday, February 7, following the 10:00 a.m. worship service, in person & via Zoom.

The 2021 Annual Meeting of the congregation and corporation of Rye Presbyterian Church is called for Sunday, February 7, following 10:00 a.m. worship, in the Sanctuary and via Zoom. We will act on changes to our by-laws, followed by a brief summary of year-end reports, presentation of the 2021 budget, and acting on the terms of call for the pastors. Any new business must be docketed with the Clerk of Session by Wednesday, January 27. *–Katy Ridley, Clerk of Session*

GENERAL NOTICES

E-MAIL PRAYER GROUP

Our e-mail prayer group is going strong. Please join us in our ministry of prayer for others. Or if you have a prayer request, please do not hesitate to contact rpcprayers@gmail.com.



WEEKDAY HOURS

The church is open 10-2, Monday through Friday. Only one door will be open - the door facing Parsons Street near the Assembly Room. If you need access to the building at some other time during the day, please contact the church office at 967-0842, or at rpc@ryepc.com. If you do come to the church, please take careful note of the guidelines that are in place so that we may all safely use the church building together. (<https://ryepc.com/article/weekday-reopening-of-rye-presbyterian/>)

ONLINE GIVING

Online donation options are available on the RPC Website Giving page (ryepc.com/give/). You may also scan the QR Code to the right with your cell phone.



Zelle We can also accept your donations with Zelle from your mobile banking app.

Please contact the church office to register with us first, 914-967-0842, or email Maida Robinson (below).

Please contact Maida Robinson at mrobinson@ryepc.com, if you have any questions.

Many thanks for your continued generosity and support of the church!

2021 SUMMER HIGH SCHOOL MISSION TRIPS TO NEW ORLEANS



It is our hope to continue serving alongside our neighbors in New Orleans this summer: June 27-July 3 and August 1-7. We will continue our partnership with Rebuilding Together New Orleans and will stay at Camp Restore of Prince of Peace Lutheran Church and School for lodging. Sign-up for the trips here: <https://ryepc.com/article/nola-youth-mission-trips-summer-2021-registration/>) and will require a \$100 deposit. Space is limited, so please mark your calendars!

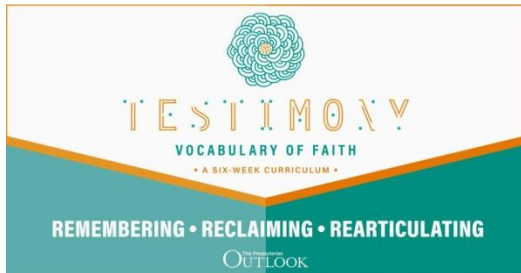
Any questions, contact Rev JP (jmarshall@ryepc.com).

CONNECTION & HIGH SCHOOL YOUTH GROUP

Both our middle school Connection and High School Youth Group are meeting with a mix of Zoom and in-person gatherings! Please visit the "Youth Ministry" page of the website – <https://ryepc.com/ministries/youth/> - to get a glimpse of what our youth are up to this year.

Adult Education

Thursdays, January 28, February 4, 11, 18, 25, March 4, 7:30-9:00 p.m., via Zoom

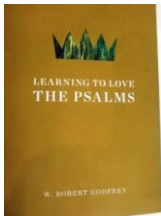


Do you want to:

- Wrestle with the language of faith and its relevance for today?
- Discern what it means to have an embodied faith?
- Consider ways of living that reflect your faith beyond the church doors?

If so, then gather virtually with others and spend six weeks exploring this new adult curriculum for Presbyterian people of faith! "Testimony" offers six stand-alone sessions exploring what we believe about God, the *Imago Dei*, covenant, grace, love, and Christian community. It invites participants to reclaim it for our own particular time and context, and reinterpret it in daily living.

Contact [John Miller](#) for more information, materials, and Zoom link.



Wednesday Mornings Women's Discipleship Group

8:30-10:00 a.m., Via Zoom

Join us for our study: **Learning to Love THE PSALMS**

For details, email either

Alicia Baldwin (alicia.baldwin@verizon.net), or

Courtney Bennett (Courtneybennett910@gmail.com).

THE RPC THRIFT SHOP IS TEMPORARILY CLOSED

At this time, our ability to take donations is limited. If you have specific items you would like to donate, please email us at: ryethrift10580@gmail.com.

Thank you for your continued support!

**THRIFT
SHOP**



Permission to reprint music in this Order of Worship and to livestream it obtained
from ONE LICENSE License #A-725535.

To Those Who Knotted Nets of Twine
Text © 1994 Oxford University Press, Inc.

You Walk along Our Shoreline (*The Salley Gardens*)
Text © 1991 GIA Publications, Inc.
Music arr. © 1943 Boosey & Co., Ltd.

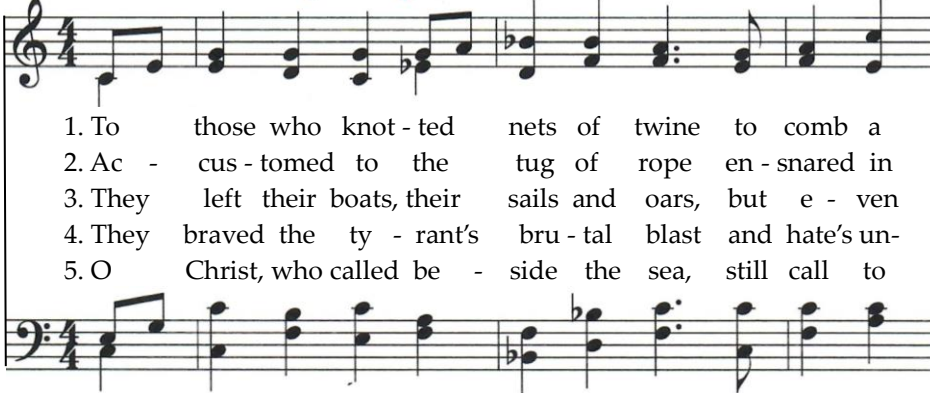
From the Nets of Our Labors (*Hamilton*)
Text and Music © 2006 GIA Publications, Inc.
All rights reserved. Used by permission.



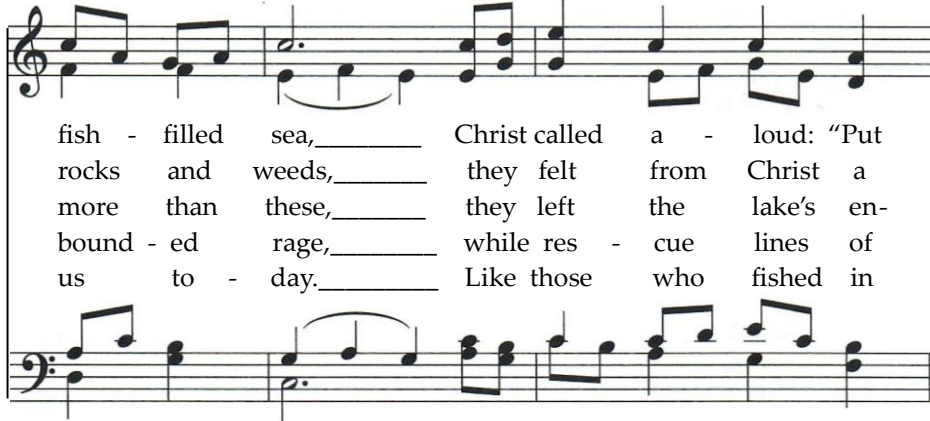
The Rev. Daniel Love, *Co-Pastor*
The Rev. Dr. John Miller, *Co-Pastor*
The Rev. Jean-Paul Marshall, *Associate Pastor for Christian Education*
Jason Charneski, *Director of Music and Organist*
Lisa Rawson, *Director of Choirs for Children and Youth*
Maida Robinson, *Chief Administrative Officer*
Peggy Berretta, *Administrative Assistant*
Denise LeVan, *Pastoral Assistant*
Juan Velasquez, *Head Sexton/Building Manager*
Alonso Osorio, *Sunday Sexton*
We are a Stephen Ministry church.

To Those Who Knotted Nets of Twine

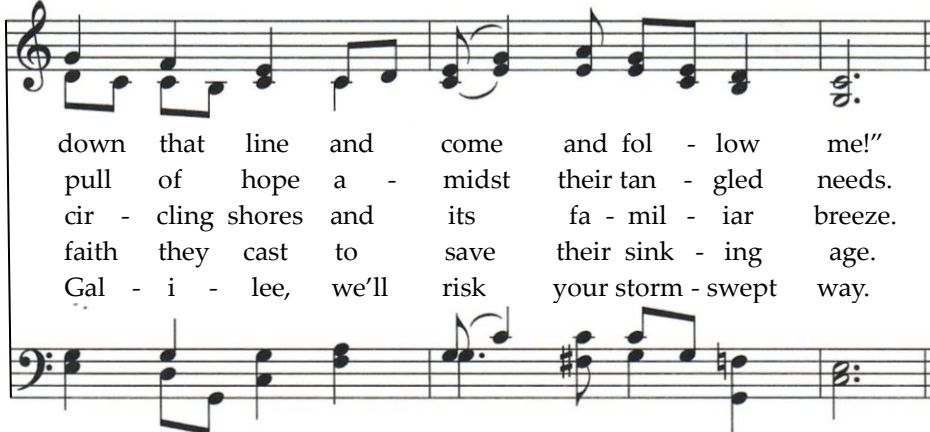
McKee



1. To those who knot - ted nets of twine to comb a
2. Ac - cus - tomed to the tug of rope en - snared in
3. They left their boats, their sails and oars, but e - ven
4. They braved the ty - rant's bru - tal blast and hate's un -
5. O Christ, who called be - side the sea, still call to



fish - filled sea, _____ Christ called a - loud: "Put
rocks and weeds, _____ they felt from Christ a
more than these, _____ they left the lake's en -
bound - ed rage, _____ while res - cue lines of
us to - day. _____ Like those who fished in



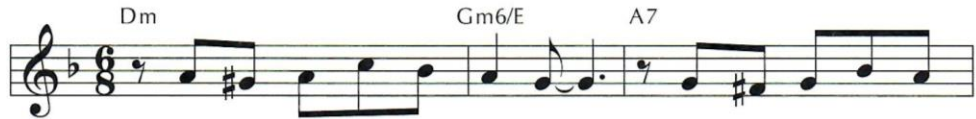
down that line and come and fol - low me!"
pull of hope a - midst their tan - gled needs.
cir - cling shores and its fa - mil - iar breeze.
faith they cast to save their sink - ing age.
Gal - i - lee, we'll risk your storm - swept way.

text: Thomas H. Troeger (b. 1945)

music: African-American Spiritual; *Jubilee Songs*, 1884; adapt. Harry T. Burleigh, 1940

From the Nets of Our Labors

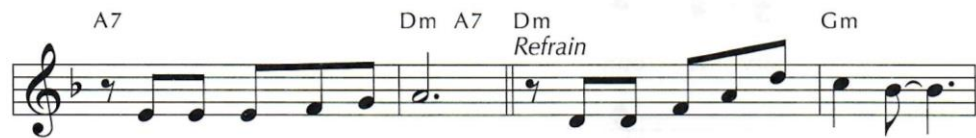
Hamilton



1 From the nets of our la - bors, through the noise and con -
 2 When we faint and grow wea - ry from the bear - ing of
 3 In the eyes of the strang - er— tear - ful, joy - ous, or
 4 When we hear words of ha - tred spread - ing fear or false
 5 In each mo - ment of cour - age, stead - fast e - ven through
 6 Like dis - ci - ples be - fore us, from the cit - y or



fu - sion, from the cit - y or sea - shore,
 bur - dens, with a mes - sage of com - fort,
 fright - ened— in the face of each neigh - bor,
 wit - ness, words that cry to be chal - lenged,
 trem - bling; in the yearn - ing for jus - tice,
 sea - shore, risk - ing self - less com - pas - sion:



Je - sus sum - mons us all. We will rise up and fol - low,

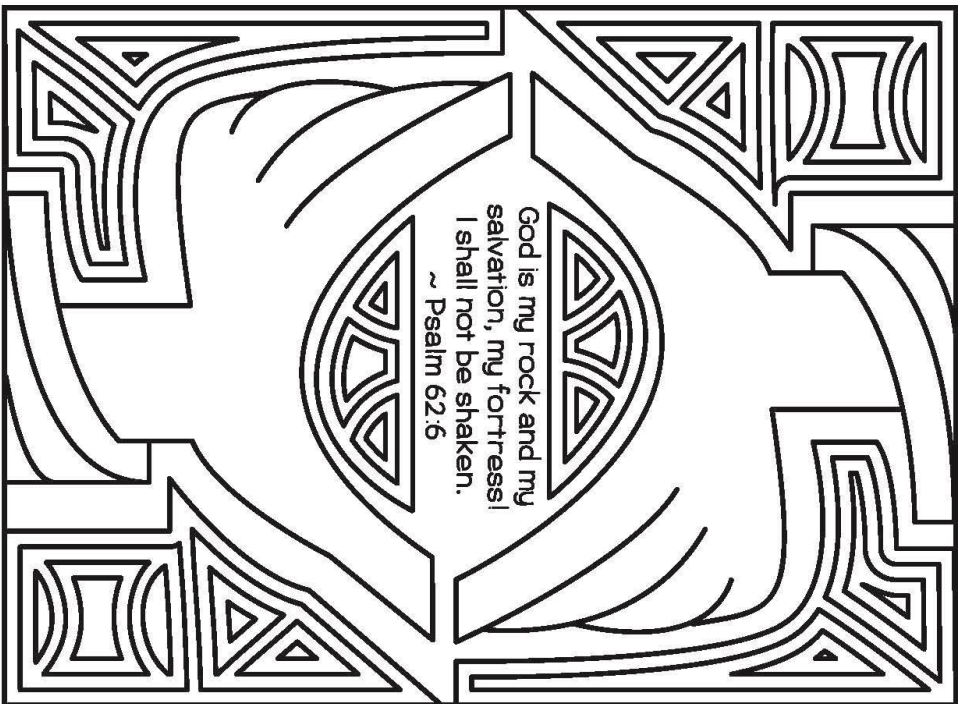


Christ be - fore and be - side us, lov - ing pat - tern to



guide us, as we an - swer the call.

text: Mary Louise Bringle, 2004
 music: John R. Kleinheksel, Sr., 2004



Suggested for use on January 24, 2021 based on the RCL.
Copyright © 2021 Illustrated Ministry, LLC. All rights reserved. May be reproduced for congregational use provided each copy carries this notice. illustratedministry.com

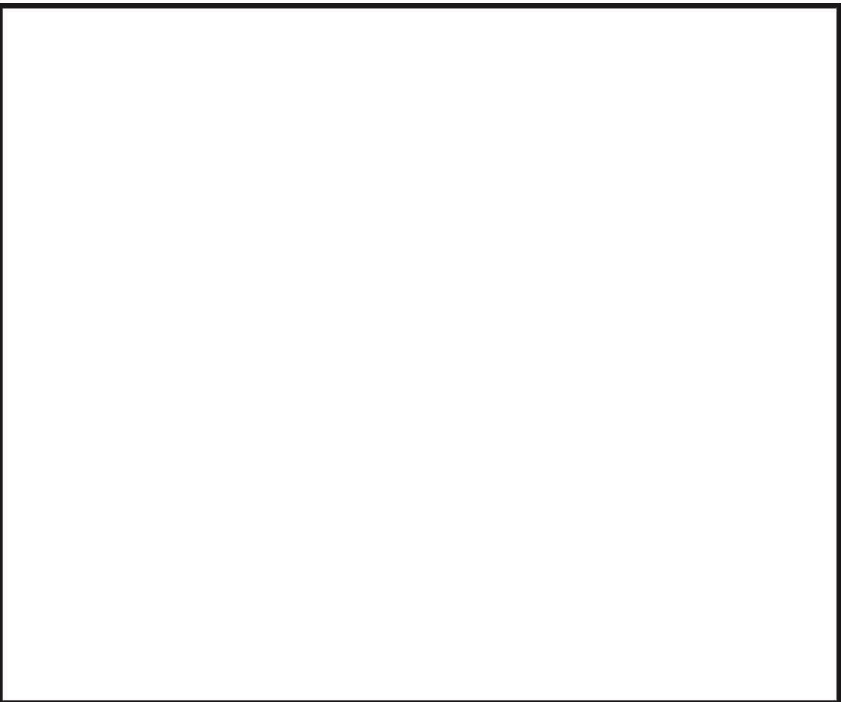
CHILDREN'S WORSHIP • BULLETIN

Activities based on Psalm 62:5-12 and Mark 1:14-20.



DRAW IT

When Jesus called his disciples, they were going about their daily lives - working at their jobs, in their homes, etc. Imagine Jesus is coming to call you as his disciple. Where are you and what are you doing when Jesus asks you to follow him? Draw a picture in the box of Jesus calling you.



FOLLOW THE PATH

In Mark 1, what was Jesus' message to the people as he traveled through Galilee and called people to follow him? Follow the path of letters, and each time you come to a capital letter, write that letter down at the bottom of the page. When you get to the end of the path, see Jesus' words spelled out.

