

CHIMING OF THE HOUR

PRELUDE FOR ORGAN

Improvisation-Prelude on *New Beginnings*

Sally Ann Morris (b. 1952)

This tune was composed in 1990 to be mated to a hymn, We Plant a Grain of Mustard Seed, written by Mary Bryan Matney. Beyond the action indicated in the title stanza of the hymn, this inner stanza puts into perspective the seemingly-small things we do: Our actions, more than words, define how love's example feeds a greater love, for love divine bursts forth from smallest seeds.

WELCOME

Pastor: May the peace of the Lord be with you.

People: **And also with you.**

PEALING OF THE BELL AND SILENT PRAYER OF PREPARATION

*O God, light of the minds that know you,
life of the souls that love you,
strength of the thoughts that seek you:
Help us so to know you that we may truly love you,
so to love you that we may fully serve you,
whose service is perfect freedom;
through Jesus Christ our Lord. Amen.*

*** CALL TO WORSHIP**

Pastor: Small as a mustard seed and lofty as a cedar:

People: **The kingdom of God is growing.**

Pastor: While we sleep and rise night and day:

People: **The kingdom of God is growing.**

Pastor: The low are brought high; the high are brought low:

People: **The kingdom of God is growing; its large branches are home to all kinds of people!**

All: **Let us worship God.**

*** HYMN 5** (online: see page 7)

God the Sculptor of the Mountains
The fully-vaccinated are invited to sing!

Jennings-Houston

*** PRAYER OF THE DAY**

CHILDREN'S MESSAGE

OLD TESTAMENT LESSON

[Ezekiel 17:22-24](#)

Gary Gibson, layreader

after each reading:

Reader: The Word of the Lord. **People: Thanks be to God.**

MUSIC FOR SOLO VOICE AND PIANO

What Is the World Like

Ryan Capozzo, tenor
Sally Ann Morris (b. 1952)

What is the world like when God's will is done?
Mustard seeds grow more than we can conceive:
roots thread the soil; branches reach for the sun.
This is how God moves us each to believe.

What is the world like when God's will is done?
No more is neighbor just ally or friend;
peace thrives in places where once there was none.
This is how God works when rivalries end.

What is the world like when God's will is done?
Witness the wandering child coming home;
watch as the parent breaks into a run.
This is how God longs for us when we roam.

What is the world like when God's will is done?
Ready for feasting, we watch through the night,
tending our lamps till the new day's begun.
This is how God readies us for the light.

These are the stories that Jesus imparts, filled with the Spirit who joins us as one.
Born through our voices, our hands, and our hearts, this is a new world where God's will is done.

-Adam M. L. Tice, 2009

GOSPEL LESSON

[Mark 4:26-34](#)

SERMON

"Seeds of Faith - Faithful Seeds"

Rev. Love

* **AFFIRMATION OF FAITH** (from *The Study Catechism*)

What do you understand by God's providence?

That God not only preserves the world, but also continually attends to it, ruling and sustaining it with wise and benevolent care. In particular, God provides for the world by bringing good out of evil, so that nothing evil is permitted to occur that God does not bend finally to the good.

What comfort do you receive by trusting in God's providence?

The eternal Father of our Lord Jesus Christ watches over me each day of my life, blessing and guiding me wherever I may be. God strengthens me when I am faithful, comforts me when discouraged or sorrowful, raises me up if I fall, and brings me at last to eternal life. Entrusting myself wholly to God's care, I receive the grace to be patient in adversity, thankful in the midst of blessing, courageous against injustice, and confident that no evil afflicts me that God will not turn to my good.

PRAYERS OF THE PEOPLE AND THE LORD'S PRAYER

Our Father, who art in heaven, hallowed be thy name. Thy kingdom come, thy will be done on earth as it is in heaven. Give us this day our daily bread, and forgive us our debts, as we forgive our debtors. And lead us not into temptation, but deliver us from evil. For thine is the kingdom, and the power and the glory, forever. Amen.

CALL FOR THE OFFERING (Go to website <https://ryepc.com/give/> or see below to give online.)

* **DOXOLOGY**

Old Hundredth

This setting is printed in the hymnal at no. 606.

**Praise God, from whom all blessings flow;
Praise him, all creatures here below;
Praise him above, ye heav'nly host;
Praise Father, Son, and Holy Ghost. Amen.**

—Thomas Ken, 1674

* **PRAYER OF DEDICATION**

* **HYMN 36** (*online: see page 8*)

For the Fruit of All Creation

Ar hyd y nos

* **CHARGE AND BENEDICTION**

POSTLUDE FOR ORGAN

Fugue in F Major [BWV 556/iii]

attr. Johann Sebastian Bach (1685-1750)

**indicates standing for those who are able.*

Welcome to Rye Presbyterian Church

If you are new to Rye Presbyterian Church, we welcome you and hope you are enriched and inspired by this time of worship. So that we may get to know you better, please fill out an information card found in the pew racks and put it in the offering plate. You may also go to: <https://ryepc.com/im-new/> and fill out the Welcome Form online.

The chancel flowers are given by

Francie Stella and family in loving memory of Francie's mother, Frances "Mimi" Blakeslee, who passed away on June 2.

To families with young children:

Welcome! We are glad you're here! Jesus not only welcomed children, he also blessed them. Know that your children's presence in worship is both welcomed and a blessing to us all!

Here are some ideas to help make the most out of worship as a family:

- ❖ Explain what is happening during worship and what is coming next. Let children cross things off in the bulletin as they happen. Whispering is okay!
 - ❖ When it's time to stand, allow children to kneel on the pews if they would like.
 - ❖ Allow children to participate in the offering by putting in your envelope or putting in their own gift in the offering plates near the doors as you leave. A picture drawn for God is appropriate!
- Most importantly, relax and be at peace. We know that God made children to be full of energy and excitement!

TODAY

Chapel Organ Concert, 11:00 a.m. (post-worship), Chapel
Chancel Choir Gathering, 11:30 a.m., Grape Arbor
High School Youth Group – Summer Book Study, 6:00 p.m., Assembly Room
Men's Bible Study, 8:00 p.m., Library



NEW CHAPEL ORGAN CONCERT

TODAY, Sunday, June 13, 11:00 a.m. (post-worship)

Please plan to attend this 30-minute concert. The program will include works demonstrating the new organ's individual stops and its overall ensemble. In addition, Ryan Capozzo (a Chancel Choir section leader) will sing pieces to demonstrate how the new organ can accompany solo singing. Fully vaccinated attendees will be invited to sing a hymn to experience the better support for congregational singing.

Seating limited to 30-40. No need to register.



VIRTUAL SUNDAY SCHOOL

This Sunday, June 13, we will talk about how God not only created every living creature, each with its own purpose and place in the world, but also blessed each and every one in order that it might live into its fullness on the Earth. We will be reminded that our planet is not just here for our use but is a place upon which all creatures are meant to thrive!

Starting Sunday, June 20, we will take a break from Virtual Sunday School so we all can come back refreshed for the beginning of the new program year in September! Later this summer we will update families on our plans for Sunday School in the fall.

During the summer, we will continue to support our families through our regular weekly Christian Ed newsletter! If you would like to receive our weekly newsletter, please contact [Rev. JP](#).

THIS WEEK

Monday, June 14

9:30 a.m. Monday Morning Bible Discussion, via Zoom

Tuesday, June 15

7:30 p.m. Nominating Committee, via Zoom

Wednesday, June 16

7:30 p.m. Trustees, via Zoom

Thursday, June 17

9:50 a.m. 3 Ts, via Zoom – *contact:* Nancy Steed (steadheart@aol.com) or Jane Mickatavage (swingramm@aol.com)

6:30 p.m. Stephen Leaders – Prime Ministers, via Zoom

GENERAL NOTICES

NEW WORSHIP GUIDELINES!

Reservations are not needed for the time being.

Masks are optional for the fully vaccinated. For a full update on our worship guidelines, click here <https://ryepc.com/article/updated-worship-guidelines-may-2021/>.

E-MAIL PRAYER GROUP

Our e-mail prayer group is going strong. Please join us in our ministry of prayer for others. Or if you have a prayer request, please do not hesitate to contact rpcprayers@gmail.com.



WEEKDAY HOURS

The church is open 10-3, Monday through Friday. Only one door will be open - the door facing Parsons Street near the Assembly Room. If you need access to the building at some other time during the day, please contact the church office at 967-0842, or at rpc@ryepc.com. If you do come to the church, please take note of the newly approved and less restrictive guidelines that are now in place. Those guidelines may be found at <https://ryepc.com/article/updated-worship-guidelines-may-2021/>.

ONLINE GIVING

Online donation options are available on the RPC Website Giving page (ryepc.com/give/), or you may scan the QR Code to the right with your cell phone.

Zelle We can also accept your donations with Zelle from your mobile banking app.

Please contact the church office to register with us first.

Contact Maida Robinson at 914-967-0842 or email mrobinson@ryepc.com, if you have any questions.

Many thanks for your continued generosity and support of the church!



CONNECTION & HIGH SCHOOL YOUTH GROUP

While the school year is coming to an end, we will be keeping the connections going all through the summer! Please visit the "Youth Ministry" page of the website – <https://ryepc.com/ministries/youth/> - to get a glimpse of what our youth are up to this summer.



RECOMMENDATIONS FOR CHURCH OFFICERS

The Nominating Committee is compiling a list of church members interested in serving as church officers or as members of the Nominating Committee. Please feel free to suggest yourself or someone you know for consideration. The Nominating Committee values and encourages self-nominations. Before nominating someone, please review the brief description of each Board found following the Recommendation Form found on the link below. Each elder, trustee, and deacon serves a three year term. Members of the Nominating Committee serve a two year term. Terms begin in January 2022.

The Nominating Committee would appreciate receiving your ideas and expressions of interest now.

The Recommendations Form can be accessed at

<https://ryepc.com/article/call-for-recommendations-for-church-officers-and-nominating-committee/>

Please return the form to the church office or via email: nominations@ryepc.com.

Note that there is also an option on the site to submit your recommendations directly online.

Sign Up Now!

RPC FOOD TRUCK SOCIAL Sunday, June 27th



Please bring your family and join us for lawn games and Pizza, Taco and Ice Cream trucks from 5:30-7:30 p.m. on the great lawn in the back of the church.

Please sign up on the church website – <https://ryepc.com/article/rpc-food-truck-social-sunday-june-27/> by June 20 with the number attending.

WESTCHESTER COUNTY MOBILE SHREDDER

On-site at RPC - Tuesday, June 22, 11:00 a.m.-1:00 p.m.

- Bring your confidential personal papers for shredding.
- Remove all large binder clips and covers.
- Paper clips and staples are ok.

Further information, go to: <https://ryepc.com/article/westchester-county-mobile-shredder-on-site-at-rpc-monday-june-22/>

Can't come Tuesday?

A locked bin will be available in Assembly Room for drop-off of materials beginning Friday, June 18.

3Ts

IMPORTANT – PLEASE NOTE: 3 Ts is moving to THURSDAYS!

Next 3 Ts is this Thursday, June 17, via Zoom at 9:50 a.m.

Topic: HUMOR

“Leave Them Laughing?” - A look at the role humor plays in our lives.

Participants are invited to bring a humorous short poem, joke, story, saying, or . . .

Join us for this interesting discussion.

Please confirm by Tuesday, June 15, so we can send you the link.

Contact: Nancy Steed (steedheart@aol.com) or Jane Mickatavage (swingramm@aol.com)

MISSION AND OUTREACH INVITES YOU TO MAKE AN IMPACTFUL DIFFERENCE IN LOCAL FAMILIES' LIVES

Please join **Mission and Outreach** between Mother's Day and Father's Day to honor mothers, fathers, and babies everywhere by donating to our **Fifth Annual Baby Bundle In-kind Campaign with Open Door**.

Open Door makes donating easy – just click on the Open Door Amazon Wishlist link and select from the baby items needed– and please make sure to include your name and contact information so they know who to thank.

<https://rebrand.ly/Baby-Bundle-Wishes>

Or, leave your items in one of the Donation boxes located in the hallway of the Church by the main office.

Why We Partner with Open Door

Health inequities in our communities have never been more evident than this past year. Throughout the COVID-19 health crisis, we have witnessed the disproportionate impact of the pandemic on those most vulnerable in our communities. Open Door has been at the forefront of COVID-19 testing and treatment, and as a Federally Qualified Health Center, they are making sure vaccinations are accessible to those most in need.

At the height of the pandemic, Open Door quickly transitioned to providing telehealth and virtual visits and altered their programs to make sure that their patients still were provided with comprehensive health and wellness care. Health Centers were reconfigured to maintain safety. Fresh Food Markets pivoted into an Emergency Food Delivery program enabling 4,000 bags of fresh food to be delivered to those isolated at home. Santa Day became a toy distribution ensuring that every child would have a special gift during the holiday season.

Despite the challenges presented by the pandemic, Open Door remained committed to addressing the needs of prenatal patients, by modifying its signature Baby Box prenatal program. Now called the Open Door "Baby Bundle" Program, patients continue to have access to essential newborn and educational resources while social distancing and keeping everyone safe.

To learn more about the Baby Bundle program, please contact Jane Levy, Senior Manager of Volunteer Programs at jlevy@odfmc.org.

Open Door Baby Bundle

The Baby Bundle provides Open Door prenatal patients with newborn necessities and information about resources available at Open Door and in the community. Each Bundle is packed with essential baby items. Please help us fill the bundles and ensure that our mothers can give their babies a healthy and safe start in life.

What's in the Baby Bundle?



The Entire Baby Bundle Costs \$200 Per Patient.

The support of the community helps ensure that Open Door can provide this essential program for our prenatal patients.

If you are interested in learning more, please contact Jane Levy, Senior Manager of Volunteer Programs, at 914-502-1468, jlevy@odfmc.org.



Ways You Can HELP and GET INVOLVED

★ HOST A DRIVE

Start a collection of Baby Bundle items with your family, friends, coworkers, social groups, and community-based organizations.

★ HELP ASSEMBLE

Come to Open Door and assemble Baby Bundles. Organize the essential items, personalize a Bundle, and help to ready the Bundles for delivery.

★ LEND YOUR SUPPORT

The cost of the Baby Bundle program is \$200 per patient. The financial support of the community helps ensure that Open Door can provide these essential items.

★ SHOP ON AMAZON

Select from a number of Open Door Baby Bundle items on our Amazon registry: <https://rebrand.ly/Baby-Bundle-Wishes>

Open Door Baby Bundle Wish List Essentials

Sleep Sacks

Wearable blanket, non-swaddle type; sizes newborn or small; microfleece for colder weather and cotton for warmer weather.

Infant Rapid-Read Rectal Thermometers

Sleep & Play Pajamas (3 - 6 months)

Diaper Rash Cream

Baby Body Wash

Burp Cloths

Onesie or Bodysuits (3 - 6 months)

Small Infant Toys

Baby Wipes

Newborn Hats, Mittens, and Socks

Baby Washcloths and Towels

Bilingual English-Spanish Board Books

Newborn & Size One Diapers

Seasonal Newborn Outfits

We need 40 of each items every month. The more we items collect, the more we can put inside the bundle.

ABOUT OPEN DOOR

Open Door provides health care and wellness programs to individuals and families in need throughout Westchester, Putnam and Ulster Counties. A pioneer Federally Qualified Health Center, Open Door provides more than 300,000 patient visits annually and serves nearly 60,000 individual patients who might not otherwise have access. Open Door offers integrated services and a holistic approach to building healthier communities. Primary medical care,

dental care, integrated behavioral health care, clinical nutrition, wellness programs, and chronic disease management are the foundation of its clinical programs. Founded as a free clinic in 1972, Open Door's mission of building healthier communities through accessible, equitable, culturally competent health care has led to site and service expansions. Today, Open Door operates centers in Brewster, Mamaroneck, Mount Kisco, Ossining, Port Chester,

and Sleepy Hollow, in addition to seven School-Based Health Centers in the Port Chester and Ossining School Districts, a mobile dental van in Mount Kisco, and a dental practice in Saugerties, NY. Open Door achieves clinical results that consistently surpass national benchmarks for patient outcomes, and is recognized as the number one New York State Health Disparity Reducer and a leading Access Enhancer by the Health Resources Service Administration (HRSA).



Permission to reprint music in this Order of Worship and to livestream it obtained
from ONE LICENSE License #A-725535.

New Beginnings [We Plant a Grain of Mustard Seed]

Music © 1990 Sally Ann Morris.

Text © 1990 Mary Bryan Matney.

God the Sculptor of the Mountains (Jennings-Houston)

Text © 1993 John Thornburg. Used by permission.

Music © 1996 Abingdon Press (admin. The Copyright Company, Nashville, TN).

All rights reserved. International copyright secured. Used by permission.

What Is the World Like

Text and Music © 2009 GIA Publications, Inc. Carol Stream, IL 60188.

All rights reserved. Used by permission.

For the Fruit of All Creation

Text © 1970 Hope Publishing Company, Carol Stream, IL 60188.

All rights reserved. Used by permission.



The Rev. Daniel Love, *Co-Pastor*

The Rev. Dr. John Miller, *Co-Pastor*

The Rev. Jean-Paul Marshall, *Associate Pastor for Christian Education*

Jason Charneski, *Director of Music and Organist*

Lisa Rawson, *Director of Choirs for Children and Youth*

Maida Robinson, *Chief Administrative Officer*

Peggy Berretta, *Administrative Assistant*

Denise LeVan, *Pastoral Assistant*

Juan Velasquez, *Head Sexton/Building Manager*

Alonso Osorio, *Sunday Sexton*

We are a Stephen Ministry church.

God the Sculptor of the Mountains

Jennings-Houston



1 God the sculp - tor of the moun - tains, God the
 2 God the nui - sance of the Pha - raoh, God the
 3 God the dress - er of the vine - yard, God the
 4 God the un - ex - pect - ed in - fant, God the



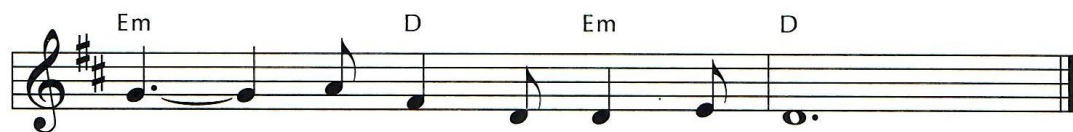
mill - er of the sand, God the jewel - er of the
 cleav - er of the sea, God the pil - lar in the
 plant - er of the wheat, God the reap - er of the
 calm, de - ter - mined youth, God the ta - ble - turn - ing



heav - ens, God the pot - ter of the land:
 dark - ness, God the bea - con of the free:
 har - vest, God the source of all we eat:
 proph - et, God the res - ur - rect - ed truth:



you are womb of all cre - a - tion;
 you are fount of all de - liv - erance;
 you are host at ev - ery ta - ble;
 you are pres - ent ev - ery mo - ment;



we are form - less; shape us now.
 we are aim - less; lead us now.
 we are hun - gry; feed us now.
 we are search - ing; meet us now.

Text: John Thornburg, 1993; alt.
 Music: Amanda Husberg, 1995

For the Fruit of All Creation

Ar hyd y nos

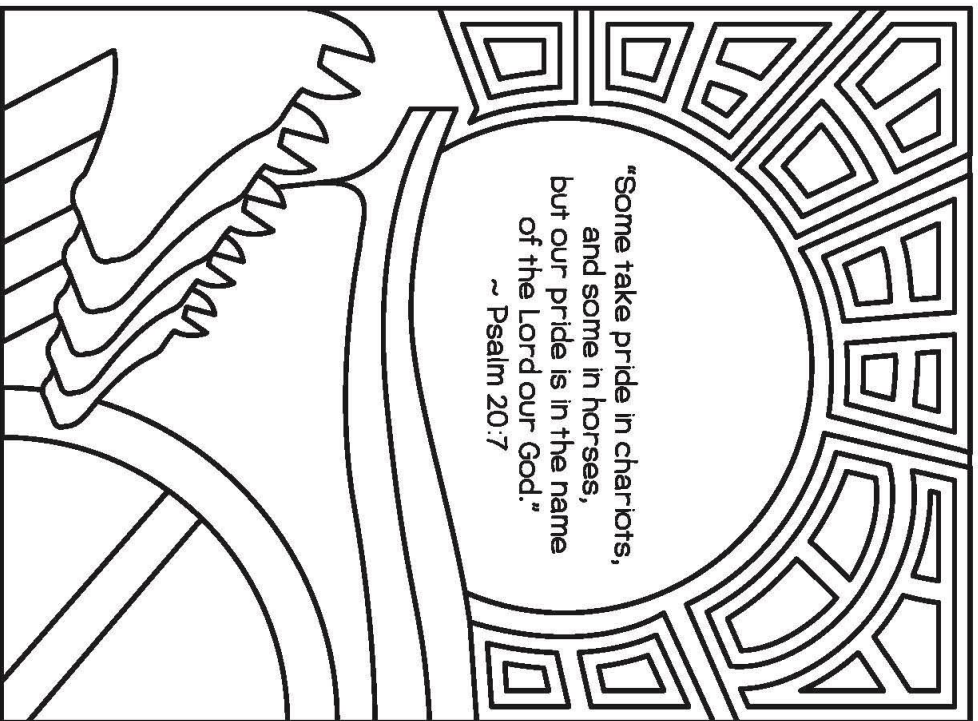
1 For the fruit of all cre - a - tion, thanks be to God.
 2 In the just re - ward of la - bor, God's will be done.
 3 For the har - vests of the Spir - it, thanks be to God.

For the gifts to ev - ery na - tion, thanks be to God.
 In the help we give our neigh - bor, God's will be done.
 For the good we all in - her - it, thanks be to God.

For the plow - ing, sow - ing, reap - ing, si - lent growth while we are
 In our world - wide task of car - ing for the hun - gry and de -
 For the won - ders that as - tound us, for the truths that still con -

sleep - ing, fu - ture needs in earth's safe - keep - ing, thanks be to God.
 spair - ing, in the har - vests we are shar - ing, God's will be done.
 found us, most of all that love has found us, thanks be to God.

Text: Fred Pratt Green, 1970; alt.
 Music: Welsh melody, c. 1784

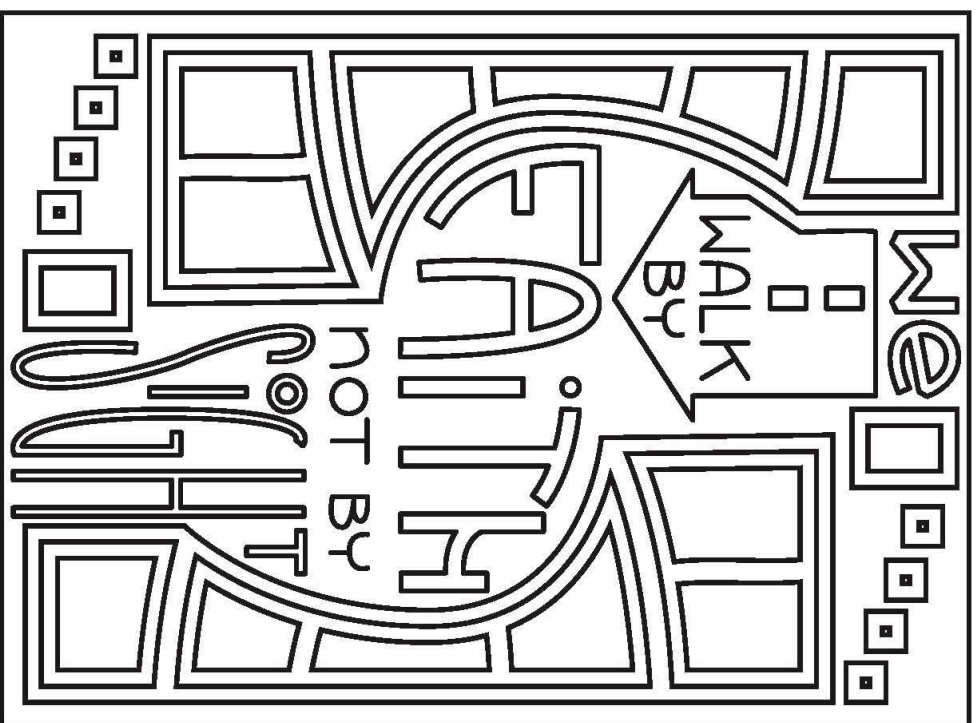


ILLUSTRATED
— MINISTRY —

Suggested for use on June 13, 2021 based on the RCL.
Copyright © 2021 Illustrated Ministry, LLC. All rights reserved. May be reproduced for
congregational use provided each copy carries this notice. illustratedministry.com

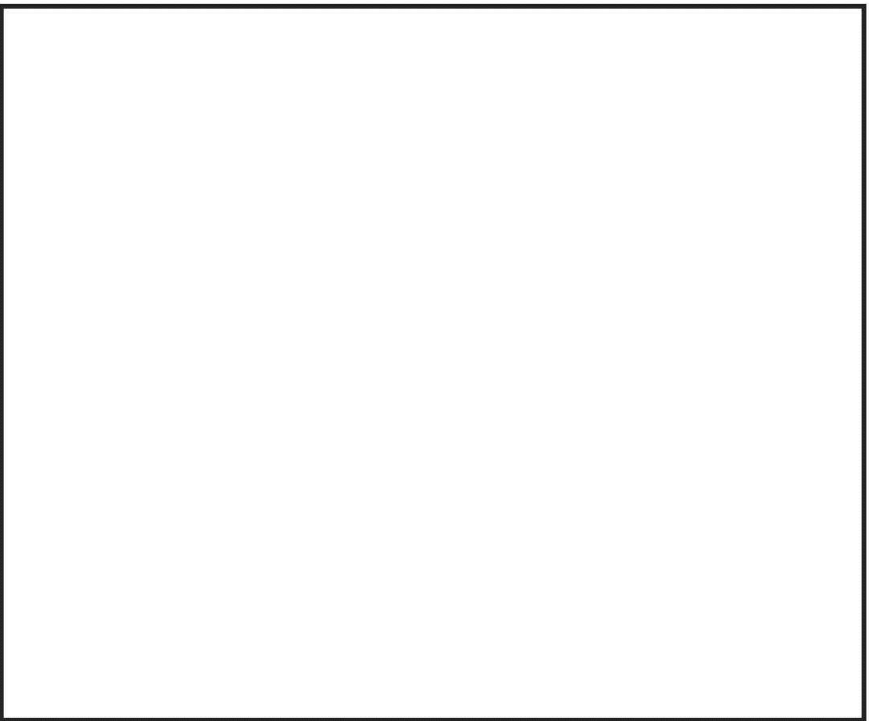
CHILDREN'S WORSHIP • BULLETIN

Activities based on 1 Samuel 15:34-16:13; Psalm 20,
2 Corinthians 5:6-10, (11-13), 14-17; Mark 4:26-34.



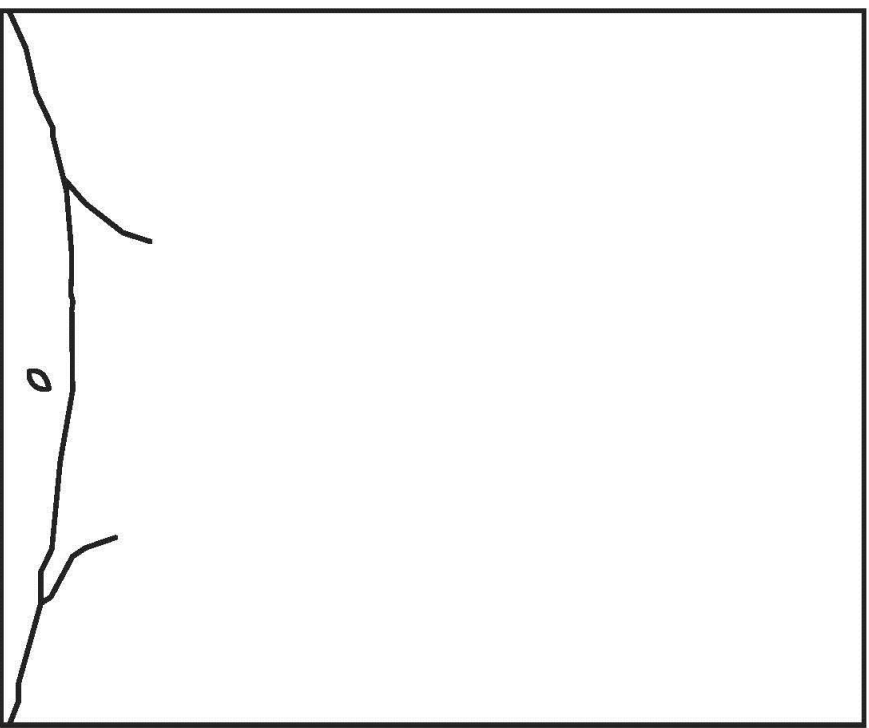
DRAW IT

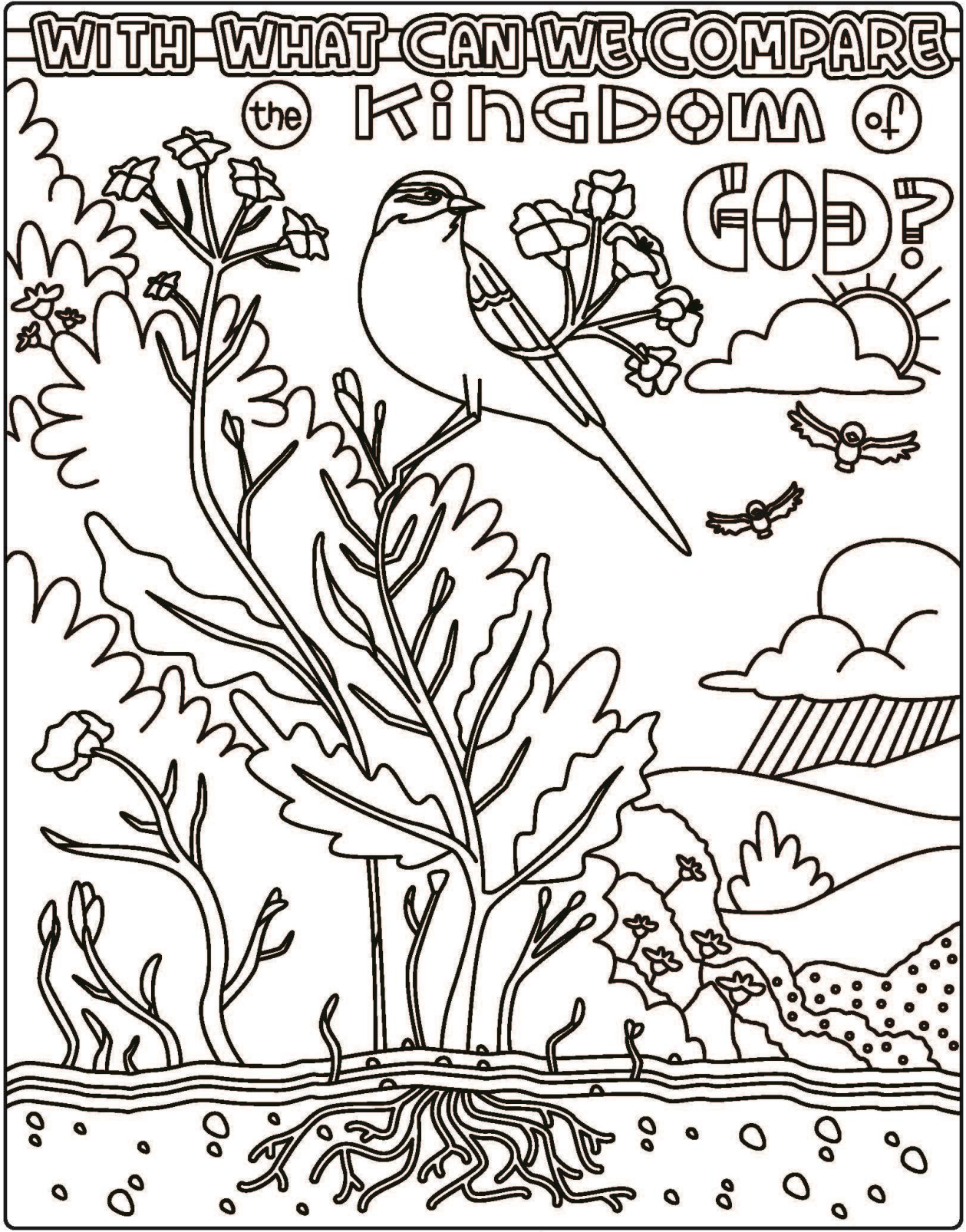
In 1 Samuel, God asks the prophet Samuel to select the next King – King David. He is a young boy at the time and no one expected him to be chosen! What God thinks is important is sometimes different from what we do. Draw a picture of someone you see as a good leader with a loving heart.



FINISH THE DRAWING

Jesus tells a parable in Mark 4 comparing God's kingdom to an enormous tree growing from a tiny mustard seed. Finish the drawing of the tree. Inside the tree, write or draw some signs of God's kingdom. Maybe people sharing! Or caring for the earth! Or loving people who are different from you!





Mark 4:26-34 • illustratedministry.com