

## A View from Above



I was so tempted to climb the scaffolding as the window crew removed the four round sanctuary windows to be refurbished. When else would a view from that unique high place be possible? But I resisted. Instead, allow me to offer a few thoughts from “above” as we turn from 2018 and enter 2019.

With Easter as late as it is this year (April 21), Lent doesn’t start until March 6, leaving us with the month of February as a quiet, hibernating, ski-traveling, winter time. In addition to the commissioning of our Stephen Ministers and the second *Show Up and Make* on February 10, the other RPC highlight is the annual meeting on February 3. It may not be everyone’s favorite Sunday, but it is a unique moment to pause the busy work of being the church to look back, and to look ahead.

Going through the Annual Report there was much to celebrate in 2018. There was the joyous time with Community Synagogue as they left our chapel and danced into their remodeled sanctuary. In 2018, there were 30 baptisms and 60 new members!! The final planned elements of the Imagine Initiative added much needed improvements to the church – increased office space, storage, and an elevator, as well as a new third manse! Imagine funded new events such as *Show Up and Make*, *Coming Home*, the concert series, and a second *Rise Against Hunger*. Our Stephen Ministry trained over 20 people for service in the care-giving ministries of the church. At year-end, so many in the congregation not only gave generously, but increased their pledge for 2019 as we seek to sustain new Imagine initiatives into the future.

Yet challenges remain. With expanded ministries and programs, the annual budget for 2019 increased over 5%. While many households have responded to meet that need, it remains critical for all of us to think about the commitments we made to being a part of the church, and to live them out as generously as we can.

In addition, as we talked about at the officer retreat in January, RPC is a church with a high level of member turnover. People move to town, join the church, and in many cases a few years later, move away. While our overall membership number remains steady (1,183 at year end), in the last 10 years we have taken in over 500 new adult members, both confirmands and adults. That is an extraordinary number of new faces to welcome to the community and into the life and ministry of the church. It also means that while those of us who have been here a while love to reconnect with long-time friends when at church, we must also be very aware of the call to hospitality. It is incumbent upon us to welcome and to include in our circle the many who come through our doors wondering if this might be their new church home.

That is the great paradox of “being church” reflected in our vision statement. *“By the grace of God, we strive to be a caring, welcoming community of followers of Christ, doing his work in the world.”* First and foremost, we live “by grace.” We are reliant on God’s activity in and among us and well beyond us. Yet we are also to be “striving” - working hard in partnership with God and with one another to live up to our commitments and what we sense God calling us to be.

As we journey together on this adventure in faith, let us recommit ourselves to God and one another. And may God look down upon our efforts and continue to empower and bless us in the days ahead.

In faith,

### What’s Inside?

- Page 2: Adult Education, Coming Home, The New RPC Website**
- Page 3: Stephen Ministry, Elevator Progress, Music Notes**
- Page 4: Christian Education, Confirmation, Communion Workshop**
- Page 5: Weekends in February, Bible Study**
- Page 6: February Schedule**
- Page 7: Presbyterian Nursery School**

## Adult Education, Coming Home, RPC New Website

Rye  
Presbyterian  
Church

[Click here](#)  
for Winter/Spring  
Brochure

Opportunities  
For Adult Education  
And Spiritual Growth

Winter/Spring  
2019

Sunday Mornings through June 9  
9:00-9:45 a.m., Westminster Room



This lectionary-based study engages adults in a deeper exploration of biblical texts. Join us as we explore the scriptural texts that are used in worship. Each session is a stand-alone session, so participants can join the study at any point.

*There will be no class on the following holiday weekends: 2/17, 4/21, 4/28, 5/26.*

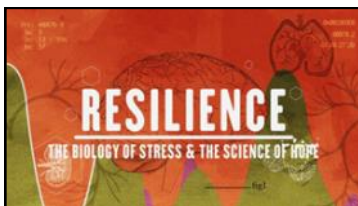
### Special Events



#### SHOW UP & MAKE!

February 9-10 and April 6-7  
Following All Worship Services

Go from mind to hand and heart as we mix art media with ideas stirred by the message and music of worship. Thematic art and craft experiences will aim to extend worship beyond the pews and enhance faith beyond the workings of our intellect. Quarterly projects introduce new ways of relating to God for people of all ages during different seasons of the church year (Epiphany and Lent). Each session will be facilitated by church members, staff, or local artists who set the stage for participants to swing by, or sit down, relax, and play. No art experience necessary! You are invited to join us for this new quarterly happening.



Wednesday,  
February 13, 7:00 p.m.  
Assembly Room

Join us for a screening and discussion of **RESILIENCE**, a one-hour documentary that delves into the science of Adverse Childhood Experiences (ACEs) and the birth of a new movement to treat and prevent toxic stress. Recognized to be one of the drivers for conditions as diverse as heart disease, cancer, substance abuse, and depression - extremely stressful experiences in childhood are understood to alter brain development and have lifelong effects on health and behavior. Janet Donat will facilitate the discussion.



#### "COMING HOME" PROGRAM IS COMING BACK!

Thursdays, through May 31,  
with Graduation on June 2.  
Dinner from 7:00-8:00 p.m.  
All are welcome for dinner in the  
Westminster Room.

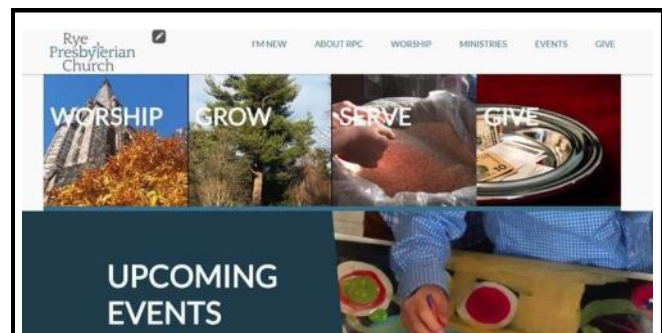
The **Coming Home** program is an extension of our long-standing Prison Ministry. In collaboration with The Beck Institute on Religion and Poverty at Fordham University, Coming Home seeks to empower those who are returning to the community from incarceration. This 18-week program pairs RPC congregants with the formerly incarcerated to help them transition back to their communities. Coming Home provides life skills, goal-setting, and sharing personal stories in a safe and supportive community.

Our Coming Home ministry offers various volunteer opportunities:

- **Mentors**—congregants who are paired with participants, supporting, encouraging, and journeying with them through the program. To volunteer as a mentor, contact Pastor Miller, [jmiller@ryepc.com](mailto:jmiller@ryepc.com).
- **Guest Speakers**—presenters are needed to teach networking, job-searching, and other skills.
- **Cooks and Hosts**—each evening begins with a meal prepared and served by RPC congregants who share table fellowship before the program begins.

To volunteer, contact Linda Otness, Meals Coordinator, at [otness.linda@gmail.com](mailto:otness.linda@gmail.com).

For more information, contact Mr. Kevin Bunch, Program Coordinator, at [savedmedic2001@yahoo.com](mailto:savedmedic2001@yahoo.com), or 914-473-2221; or Pastor John Miller at [jmiller@ryepc.com](mailto:jmiller@ryepc.com), or at 914-967-0842.



The New RPC Website  
Please visit the church online  
at its fresh new website —  
[www.ryepc.com](http://www.ryepc.com)!

## Stephen Ministry, Elevator Progress, Music Notes



### Celebrating 15 years at Rye Presbyterian!

- ❖ **What is Stephen Ministries?** An educational organization founded in 1975 that produces training and resources known for their excellence, practicality, psychological integrity, and theological depth. These resources cover topics such as caring ministry, assertive relating, spiritual gifts discovery, grief support, spiritual growth, and more. Congregations and other organizations use these resources to strengthen and expand ministry. Individuals use them to improve their ability to relate to and care for others, grow in faith, and journey through life crises.
- ❖ **What do Stephen Ministers do?** They faithfully show up to listen and offer confidential care to people struggling with trials including death, divorce, illness, unemployment, an empty nest, relocation, and many other burdens.
- ❖ **How are Stephen Ministers trained?** RPC offers the 50-hour curriculum every few years, equipping caregivers to offer high-quality confidential care. The 2018-2019 training class will be commissioned during the 10 o'clock worship on February 10.
- ❖ **How has Stephen Ministry helped?** More than 225 people have benefited from the program offered over the past 15 years at Rye Presbyterian Church. Stephen Ministers express appreciation for how the group training and one-to-one meetings enrich their quality of life. One Care Receiver related after receiving care: "Having Stephen Ministries in my life has made a very difficult time much easier to navigate through. Keep up the good work!"
- ❖ **What are the next steps to explore a Stephen Ministry relationship?** Contact our clergy, or Stephen Ministry Referrals Coordinator Tav Rogers ([tav@rogers.fm](mailto:tav@rogers.fm), or 914-400-3568), to learn more about the resources available within the caring arm of Rye Presbyterian Church.



Elevator Control Room



Elevator at First Floor



Elevator from basement

**ELEVATOR  
GOING  
UP!**



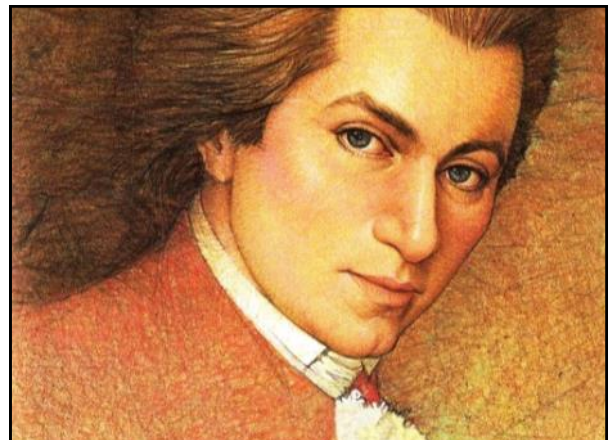
**From Jason Charneski**

### An Invitation: Join the Chancel Choir for the Mozart *Requiem*

Our Chancel Choir and the Choir of Christ's Church, Rye, will combine to present the dramatic *Requiem* by Wolfgang Amadeus Mozart, accompanied by orchestra, in concert here at RPC the afternoon of Sunday, March 31. This notice serves as an invitation to those of you who have a choral singing background, but are not able to sing regularly in the choir.

Our rehearsals for this masterwork have just started; so, you won't be behind if you let me know of your interest now: Please speak with me, call me (914-967-0842, ext. 16), or email me ([jcharneski@ryepc.com](mailto:jcharneski@ryepc.com)).

**We'd be thrilled to have you participate  
in this community endeavor!**



## Christian Education, Confirmation, Communion Workshop



### Sunday School

This month we continue to celebrate the season after the Epiphany. It is a season that invites us to open ourselves to new insights, new understandings, and new ways. Each week we will encounter Jesus bringing good news to everyone; and we will be encouraged to strive, live, and grow into the people God intends. Below are the themes and texts for each week. We invite families to join us by engaging these stories together at home!

**Feb 3:** Matthew 2:1-12  
(Power of the Word)  
Singing Our Faith

**Feb 10:** Luke 3:15-17, 21-22  
(Being Surprised)

**Feb 17:** John 2:1-11  
(Being Blessed)  
Enrichment Sunday

**Feb 24:** Luke 4:14-21 (Be Holy)

Contact [Jean-Paul Marshall](mailto:jmarshall@ryepc.com)  
with any questions.

### The Christian Education Newsletter

It has been found that parents are the primary influence on their children's journey of faith. That means our children first begin to understand the love of God and the Christian faith through the love

and care of their parents and through the faith practices observed at home.

We seek to help parents with faith development at home by providing a variety of ways for families to engage scripture, ask questions, and grow closer to God together. It is our hope that this weekly newsletter helps families experience God at work in their everyday lives. The newsletter will be sent out each Monday.

If interested in receiving this newsletter, please contact Jean-Paul Marshall ([jmarshall@ryepc.com](mailto:jmarshall@ryepc.com)).

### Middle School Connection

RPC's Middle School Youth Group is open to all 6<sup>th</sup>–8<sup>th</sup> graders.

**Regular Meeting:**  
**Wednesday, February 6,**  
**5:30 p.m. in the Youth Rooms.**

### "Cards for College" Coffee Hour

All ages are invited to join us for a special coffee hour following worship on Sunday, February 3, as we gather to write cards to our college freshmen! We will have cards out for each student so everyone can write out words of love and encouragement. Children are invited to write in the cards as well, or to color something of their own to send with the cards.

### YOUTH High School Youth GROUP Group

All 9<sup>th</sup>–12<sup>th</sup> graders are welcome at RPC's High School Youth Group!

**Sunday, February 10**  
**6:00 p.m. to 7:45 p.m., Kitchen & Westminster Room.** We will meet in the kitchen to prepare a meal together for the Coming Home program that will be held the following Thursday. We will learn to cook a recipe together and discuss the importance of the Coming Home program held by our church.

**Thursday, February 14**  
**6:30 p.m. to 8:30 p.m., Kitchen & Westminster Room.** We will help serve the meal of the evening and share table fellowship with the participants and mentors attending the Coming Home program that evening. This is a great way for the youth to participate in one of our community's ministries!

**Sunday, February 24**  
**6:00 p.m. to 7:45 p.m., Youth Rooms**  
We will gather for some food, conversation, and games! Also, if need be, we will talk about last preparations for the Midnight Run on March 2.

#### We are on Instagram!

Username: ryepresyouth  
(click [here](#)).

#### Updates through GroupMe!

Please email your name and phone number - [jmarshall@ryepc.com](mailto:jmarshall@ryepc.com).



### COMMUNION WORKSHOP

Saturday, February 9, 10:00-11:30 a.m.

**The body of Christ?**  
**What is that all about?**  
**And what exactly is in that cup??**

If your child or children have been curious about the Lord's Supper, this is a great opportunity for children to learn more about it, to be officially welcomed at the communion celebration of the church, and for you to grow in your faith together.

On Saturday, February 9, from 10:00-11:30 a.m., children in the second through fifth grades are welcome to come with a parent to this special workshop. Together we will explore the meaning of the sacrament and how we celebrate it here at Rye Presbyterian.

**Space is limited, so please sign up by contacting [Rev. Love](mailto:Rev. Love).**

### Confirmation 2019

**Sunday, February 3**  
**"The Holy What??"**  
4:00 p.m. in the Westminster Room  
(Please note the earlier time!)

**Sunday, February 10**  
**"Church...why bother?"**  
5:00 p.m. in the Westminster Room

**Sunday, February 24**  
**"Presbyterian? Who Cares?"**  
5:00 p.m. in the Westminster Room

## Weekends in February, Bible Study

### Saturday, February 2

- 10:00 a.m. Women's Bible Study / Library
- 5:00 p.m. Evening Worship & Communion in the Chapel

### Sunday, February 3

- 8:30 a.m. Holy Communion in the Chapel
- 8:40 a.m. Prayer Gathering / Library
- 9:00 a.m. Adult Education / Westminster Room
- 9:15 a.m. Children's Choir Rehearsal / Chapel
- 10:00 a.m. Morning Worship & Communion in the Sanctuary  
Children's Choir sings  
Sunday School  
-Children attend worship through children's message.
- 11:00 a.m. Annual Congregational Meeting / Sanctuary
- 11:00 a.m. Youth Choir Rehearsal / Chapel
- 11:15 a.m. Chancel Choir Rehearsal / Choir Room
- 12:30 p.m. Mozart *Requiem* solo auditions / Chapel
- 4:00 p.m. Confirmation Class / Westminster Room

### Saturday, February 9

- 10:00 a.m. Women's Bible Study / Library
- 10:00 a.m. Children's Communion Workshop / Westminster, Sanctuary, Chapel, and Kitchen
- 5:00 p.m. Evening Worship & Communion in the Chapel
- 5:30 p.m. Show Up & Make! / Chapel

### Sunday, February 10

- 8:30 a.m. Holy Communion in the Chapel
- 8:40 a.m. Prayer Gathering / Library
- 9:00 a.m. Show UP & Make! / Chapel
- 9:00 a.m. Adult Education / Westminster Room
- 9:15 a.m. Youth Choir Rehearsal / Library
- 10:00 a.m. Morning Worship in the Sanctuary  
Youth Choir sings  
Sunday School  
-Children attend worship through children's message.
- 11:00 a.m. Show Up & Make! / Assembly Room
- 11:15 a.m. Chancel Choir Rehearsal / Choir Room
- 5:00 p.m. Confirmation Class / Westminster Room
- 6:00 p.m. High School Youth Group / Westminster Room
- 8:00 p.m. Men's Bible Study / Library

### Saturday, February 16

- 5:00 p.m. Evening Worship & Communion in the Chapel

### Sunday, February 17

- 8:30 a.m. Holy Communion in the Chapel
- 8:40 a.m. Prayer Gathering / Library
- 10:00 a.m. Morning Worship in the Sanctuary  
No Sunday School—Enrichment Activities  
-Children attend worship through children's message.
- 11:15 a.m. Chancel Choir Rehearsal / Choir Room

### Saturday, February 23

- 5:00 p.m. Evening Contemplative Worship in the Chapel

### Sunday, February 24

- 8:30 a.m. Holy Communion in the Chapel
- 8:40 a.m. Prayer Gathering / Library
- 9:00 a.m. Adult Education / Westminster Room
- 10:00 a.m. Morning Worship in the Sanctuary  
Sunday School  
-Children attend worship through children's message.
- 11:15 a.m. Chancel Choir Rehearsal / Choir Room
- 5:00 p.m. Confirmation Class / Westminster Room
- 6:00 p.m. High School Youth Group / Youth Rooms
- 8:00 p.m. Men's Bible Study / Library

## BIBLE STUDIES

### Men's Bible Study

**Sundays, February 10 and 24, at 8:00 p.m. in the Library**  
All are welcome to join in as we continue this study and conversation with scripture and each other. Contact Dan Love ([dlove@ryepc.com](mailto:dlove@ryepc.com)) for more information.

### Wednesday Morning Bible Discussion

**Wednesdays, February 6 and 20,  
at 10:00 a.m. in the Library**

Join in as we survey the Hebrew Scripture from above with "The Bible Project" videos. All are welcome. Contact [Dan Love](mailto:DanLove@ryepc.com) if you'd like to be on email reminder list.

### Women's Bible Study

**Saturdays, February 2 and 9, 10:00 a.m., Library**  
Please join the Women's Bible Study twice monthly on Saturday mornings at 10:00 a.m. in the RPC Library. A warm welcome and hot coffee await!  
For further information, contact [Cynthia De Santis](mailto:CynthiaDeSantis@ryepc.com).



### ANNUAL CONGREGATIONAL MEETING

**Sunday, February 3,  
following 10:00 a.m. worship service.**

The 2019 Annual Meeting of the congregation and corporation of the Presbyterian Church in the Town of Rye is called for Sunday, February 3, in the Sanctuary following 10:00 a.m. worship. A brief summary of year-end reports will be followed by the presentation of the 2019 budget and acting on the terms of call for the pastors.

- Doug DeStaebler, *Clerk of Session*

**Contemplative Saturday at 5 Service  
February 23 in the Chapel**

*Come, enter God's presence.  
Find your center.*

---



---

## February Schedule of Meetings, Events, and Programs

---

### CHURCH OFFICES AND BUILDINGS CLOSED ON PRESIDENTS' DAY, MONDAY, FEBRUARY 18

#### BOARD MEETINGS

**Deacons:** Wednesday, February 13, 7:30 p.m., Library  
**Trustees:** Wednesday, February 27, 7:30 p.m., Youth Rooms  
**Session:** Wednesday, February 27, 7:30 p.m., Library

#### WORSHIP AND STUDY

##### **Worship on Saturday evening:**

Saturdays, 5:00 p.m., February 3, 10, 17 & 24

##### **Worship on Sunday:**

8:30 a.m. Holy Communion in the Chapel  
 10:00 a.m. Worship in the Sanctuary  
**Prayer Gatherings:** Sundays in the Library at 8:40 a.m.

##### **Adult Education:**

**Sundays, 9:00-9:45 a.m., Westminster Room:**

**Feasting on the Word:** Through June 9 (*No class on the following holiday weekends: 2/17, 4/21, 4/28, 5/26.*)

##### **Special Events:**

*Show Up & Make!* Following all Worship Services, February 9-10, Chapel & Assembly Room  
*Resilience:* Wednesday, February 13, 7:00 p.m., Assembly Room, screening/discussion of documentary which delves into the science of Adverse Childhood Experiences

**Sunday School:** Regular Sunday School on February 3, 10 & 24; Enrichment Activities, February 17, Westminster Room

**Confirmation:** Sundays, Westminster Room, February 3 at 4:00 p.m., February 10 & 24 at 5:00 p.m.

**Men's Sunday Bible Study:** February 10 & 24, 8:00 p.m., Library

**Wednesday Morning Bible Discussion:** February 6 & 20, 10:00 a.m., Library

**Women's Bible Study:** Saturdays, 10:00 a.m., February 2 & 9, Library

**Women's Discipleship:** Tuesdays, 1:00-2:30 p.m., Library.

#### YOUTH

**Boy Scout Troop #2:** Every Tuesday, 7:00 p.m., Assembly Room

**Connection:** Wednesday, February 6, 5:30 p.m., Youth Rooms,

**High School Youth Group:** Sunday, February 10, 6:00 p.m., RPC Kitchen & Westminster Room;

Thursday, February 14, 6:30 p.m., Coming Home dinner, RPC Kitchen & Westminster Room;

Sunday, February 24, 6:00 p.m., Youth Rooms

#### MUSIC

**Chancel Choir Rehearsal:** Sundays, 9:15 & 11:15 a.m.

**Children's Choir Rehearsal:** Thursdays, 3:45 p.m., Choir Room ; Sunday, February 3, 9:15 a.m., Chapel

**Youth Choir Rehearsal:** Sunday, February 3, 11:00 a.m., Chapel, and Sunday, February 10, 9:15 a.m., Library

#### OTHER CHURCH MEETINGS, EVENTS, AND PROGRAMS

**Annual Congregational Meeting:** Sunday, February 3, 11:00 a.m., Sanctuary

**3 Ts:** Tuesday, February 19, 10:00 a.m., Library

**Children's Communion Workshop:** Saturday, February 9, 10:00-11:30 a.m., Westminster/Sanctuary/Chapel/Kitchen

**Coming Home Dinners:** Thursdays, 7:00-8:00 p.m., Westminster Room

**Friendly Visitors:** Monday, February 4, 10:00 a.m., Westminster Room

**Mission & Outreach:** Wednesday, February 6, 7:30 p.m., Library

##### **Stephen Ministry:**

Stephen Leaders: Tuesday, February 5, 6:00 p.m., Library

Continuing Education and Supervision: Tuesday, February 5, 7:00 p.m., Westminster Room

**Thrift Shop:** Thursdays, 10:00 a.m.-1:00 p.m.

**Women's Association:** Monthly Meeting, Monday, February 4, 9:00 a.m., Library

#### OUTREACH AND SUPPORT GROUPS

**AA Rye Harrison Group:** Mondays, 7:30 p.m., Assembly Room

**AA Group:** Thursdays, 7:30 p.m., Westminster Room

**Mr. Westchester/Al-Anon Group:** Mondays, 7:30 p.m., Library

**Helping Hands:** Thursday, February 21, 10:00 a.m., Kitchen & Assembly Room

## Rye Presbyterian Nursery School

### Greetings to the RPC Community from Kristin Bassett Kumar

#### Faculty Professional Development:

The RPNS faculty participated in a workshop led by RPNS Occupational Therapist, Margaret Leddy, entitled: "Sensory Integration Strategies for



the Classroom." The teachers carefully looked at sensory processing and set classroom strategies to fulfill students' sensory needs. Margaret Leddy helped



define body awareness and sensory-seeking behavior. "What is caused by sensory needs?" versus "what is behavioral?" were questions that were broken down. The RPNS staff was provided with a better understanding of how our sensory systems are wired and how to interpret and address atypical behavioral responses.

#### Family Movie Night:

On January 25, RPNS had its first ever Family Movie Night! The evening included a pizza dinner with *Toy Story* characters Woody and Jessie in the Assembly Room and the viewing of the movie *Toy Story* in the Westminster



Room. During the event, children created *Toy Story* themed Valentine Cards for the residents of the Osborn Nursing home. They also participated in a dance party with glow sticks and flashlights in one of the classrooms. All the funds raised from the event will help fund scholarships for financial aid families.



[The Rev. Daniel Love](#), Co-Pastor

[The Rev. Dr. John Miller](#), Co-Pastor

[The Rev. Jean-Paul Marshall](#), Associate Pastor for Christian Education

[Jason Charneski](#), Director of Music and Organist

[Lisa Rawson](#), Director of Choirs for Children and Youth

[Maida Robinson](#), Chief Administrative Officer

[Peggy Berretta](#), Administrative Assistant

[Denise LeVan](#), Pastoral Assistant

[Juan Velasquez](#), Head Sexton/Building Manager

### Rye Presbyterian Church

882 Boston Post Road

Rye, New York 10580

Tel: 914.967.0842

[www.ryepc.com](http://www.ryepc.com)

*We are a Stephen Ministry church.*