

STEWARDSHIP

... 2023 and beyond

Just as things look to be returning to some semblance of pre-pandemic normal, there is nothing like mentioning stewardship to put a dent in Sunday attendance. Uh oh, here we go... money talk. Because when most of us hear “stewardship,” we think fundraising. We think of church leaders looking at the coming year and wondering, will we have enough to do all that we hope to do?

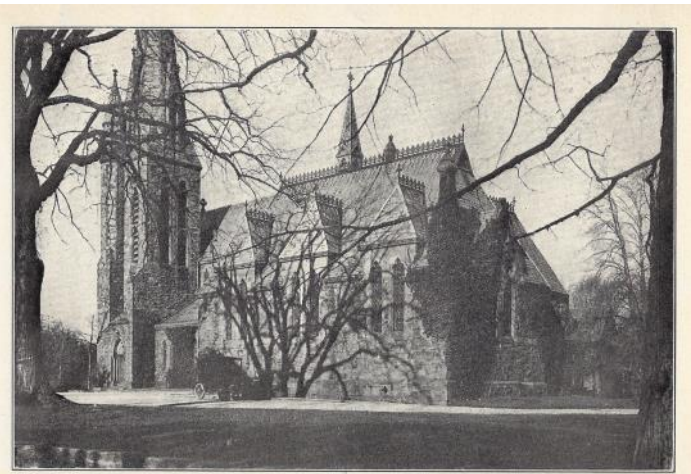
Yet stewardship is far more than working to meet the church budget. That is a part of it, but we also have to think far bigger than a profit/loss statement for the year ahead.

Instead, stewardship is a much broader topic, and one that reaches to the very core of our identity as people of faith seeking to follow in the way of God. As was heard at the Queen’s funeral last month, even the highest royal viewed her role as that of service. And while we do not have the wealth or power of a monarch, nonetheless, each one of us has been given gifts and skills and resources – for a time. As is so often the case in the bible, God hands to human beings resources to be tended - like a garden in Eden, or a vineyard in Israel, or in a very real community of people seeking to live in faith together as a church. God asks us to steward it for a time – to manage all we have wisely – before we hand it over to those who will come after us. We are to tend and make wise use of all we have, so that all the world is a better place because of our stewardship.

This summer, Carol and I took over ownership and management of the old farmhouse in the Adirondack Mountains that my great-grandfather bought in the early 1900s. As we began our time of caring for that house, we were amazed by the good stewardship of the cousins who owned it for the last 80 years. They gave us detailed records for every appliance and fixture, and maps of every plant and tree. We discovered all the ways they had improved the house to make it more comfortable and safe. All the little quirks and the ways they had addressed them were explained to us. We hope we can be half as good as they were at stewarding that house into this next chapter.



Later this month, we will kick off our Stewardship campaign for 2023. And at risk of causing some confusion, as we do each year at this time, we will be asking everyone to indicate their giving plans for the coming year. Trustees and elders all breathe easier as budgets are approved in January when they see the generous pledges of the many good stewards of this church. At the same time, there will be an opportunity for everyone to consider their long-term planned giving. Not just next year, but even after we are gone from this place and this earth. How might we use what we have to invest in the future mission of the church as a part of our legacy?



A VIEW OF THE CHURCH AND CHAPEL FROM PARSONS STREET.

Good stewards are intentional. They don’t often wing it. They prayerfully make a plan, and to the best of their ability, they live out their plan. All our giving – from next week, until long after we are gone – is planned giving. As you steward the resources in your care, please keep an eye out for the mailing from the RPC Stewardship committee later this month. For the coming year, and far beyond, may we all be good and faithful stewards of all that has been entrusted to us.

Stewarding together,

What’s Inside?

- Page 2:** Planned Giving, Caring Connections
- Page 3:** Adult Education
- Page 4:** Christian Education, Confirmation
- Page 5:** Food to Grow on, Thrift Shop, Giving
- Page 6:** Music Notes
- Page 7:** This Month and Upcoming Events
- Page 8:** Worship, Chancel Flowers
- Page 9:** Bible Studies, October Meetings,
- Page 10:** Rye Presbyterian Nursery School

Planned Giving, Caring Connections



What's Your Legacy?

Learn more about Planned Giving to benefit Rye Presbyterian Church at www.ryepc.com



Rye Presbyterian has nurtured our family for over 25 years. Rick and I believe RPC deserves remembrance in our estates. It's our way of paying it forward to future RPC families. *Marty Bradt*

Caring Connections

Caring Connections is successfully underway. Sixteen participants embarked on a ten-week journey in fellowship with one another and in preparation to provide support for those in need. At the opening retreat, the Stephen Ministry-based curriculum introduced trainees to the Caregiver's Compass, a symbol utilized to chart one's path throughout the training and to remind caregivers of the four important characteristics of spiritual care. Here are some of the descriptions compiled by this year's group when brainstorming the meaning of each compass point:



Compassionate: empathy, heartfelt, non-judgmental, and caring

Full of Faith: hopeful, peaceful, devoted, grounded, prayerful, listens for God's direction, at ease

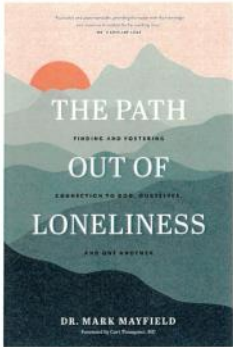
Skilled: dependable, good active listener, presence, focus, know your role, continue learning

Trustworthy: keeping confidences, honesty, dependability, stability, openness, honesty, respectful

The Caregiver's Compass is a symbol reminding us that high-quality, confidential, one-to-one Christ-centered care is available at Rye Presbyterian Church. Please contact the clergy if you or someone you know might benefit from meeting with a compassionate, full of faith, skilled, trustworthy caregiver.

Adult Education

BOOK STUDY



THE PATH OUT OF LONELINESS

FINDING AND FOSTERING
CONNECTION TO
GOD, OURSELVES,
AND ONE ANOTHER

DR. MARK MAYFIELD

Monday evenings, Oct. 10, 17, 24, 31
7:30pm, Church Library

We have lost the art of connection, especially over the past several years. This study will encourage you to develop healthy habits that will move you from isolation to connection; learning the importance of attachment, the power of relationships, the gift of vulnerability, and the vision of a God who knew from the beginning that we are created to be in community. John Miller will facilitate this book study. Please contact him at jmiller@ryepc.com to let him know you plan to attend. Please purchase and read the book *in advance*.

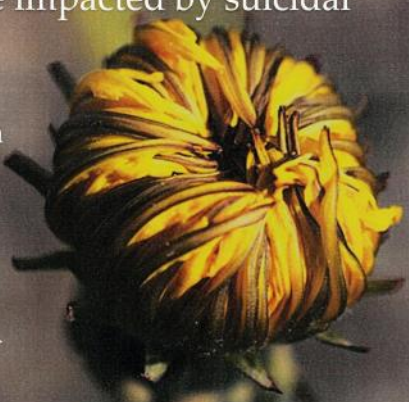
Rye Presbyterian Church Adult Education

Soul Shop for Congregations


Ministering to those impacted by suicidal desperation.

Rye Presbyterian Church
Sunday, Oct. 23
11:15 am – 12:45 pm
OR
Tuesday, Oct. 25
7:30 pm – 9:00 pm

This 90 minute workshop will be lead by John Miller and Jean-Paul Marshall.



In recent years our congregation and community has experienced several suicides. We have offered a variety of programing in response to these heartbreaking events. We encourage you to attend the 1½ hour *Soul Shop for Congregations* workshop this fall. The workshop will be offered twice, on Sunday, Oct. 23, and on Tuesday evening, Oct. 25, but you only attend one of the sessions. This workshop will be led by John Miller and Jean-Paul Marshall. *Soul Shop for Congregations* has three objectives: 1) Familiarize participants with the incidence and impact of suicidal desperation on the adults and youth in their faith communities; 2) Train participants in a simple, conversational method for saving the life of someone considering suicide or companionship those impacted by suicidal desperation; and 3) Provide participants with an experience that models good relational skills and fosters confidence in their ability to make a difference.



Advance registration is highly encouraged. There is no cost.

Please contact either John Miller at jmiller@ryepc.com or Jean-Paul Marshall at jmarshall@ryepc.com to register.
(Note that while this workshop is designed to be done in person, a hybrid session may be offered for Sunday only, if requested.)

Christian Education, Confirmation 2023



Our 2022-2023 Sunday School program is off to an amazing start this year! This month we continue our journey through our Sunday School curriculum called **Celebrate Wonder**, which seeks to engage our children's natural sense of wonder and curiosity to help them understand God's love! Through opportunities for reflection, music, engaging activities, and spiritual practices, our children will be given a safe space to ask big questions and help them live into their identities as beloved children of God. Below are the stories we are engaging this month:

- Oct. 2:** Children's Chapel (World Communion Sunday!)
- Oct. 9:** Enrichment Sunday
- Oct. 16:** 1 Samuel 7-8; 10:17-24 (Samuel Anoints Saul)
- Oct. 23:** 1 Samuel 17:1-51 (David and Goliath)
- Oct. 30:** 1 Samuel 18:1-5; 20:1-4 (David and Jonathan)

We invite families to engage these stories together at home! This curriculum comes with its own Take-Home pages that invite families to read, wonder, and pray together. These pages will be sent home with your children every Sunday morning. We will also include these pages in our **weekly Christian Ed newsletter**. If you would like to receive these pages and are not already signed up for our newsletter, please contact

Children's Chapel

Starting on Sunday, October 2, we are introducing Children's Chapel as part of our Sunday School program! On a quarterly basis, on the first Sunday of the month, our children will gather in the chapel to wonder about God's love through the rhythm and practices of worship by singing, praying, and engaging God's Word together. We will finish in time for the children to return to worship in the sanctuary and join the congregation as we all celebrate communion together. Each Children's Chapel will have its own theme based on where it falls in the liturgical calendar. This month's focus will be on World Communion Sunday as we hear the story of Jesus feeding the crowd of 5,000 people and reflect on the sacrament of communion.

Middle School Connection

All 6th-8th graders are welcome at RPC's Connection!

- **Wednesday, October 5 @ 5:30 p.m., Youth Rooms.** We'll take time to catch up over pizza, play some games, and reflect together!
- **Wednesday, October 19, 5:30 p.m., Youth Rooms** Jessica Lodato, the Rye Youth Council Educator will lead our group through a discussion and some activities on social and emotional learning skills!
- **Friday, October 28 @ 4:30 p.m., BETA Climbing:** Join us for rock climbing at BETA in Stamford! We'll meet at 4:30 p.m. in the church parking lot and will be back by 7:00 p.m. *Limited to 10 youth.* Cost: \$25 per youth. Please RSVP to Rev. JP by Friday, October 21.

Let **Rev. JP** (jmarshall@ryepc.com) know if you'd like to be on the **parent email list**. All updates about Connection gatherings will also be put up on the website each month.

Updates through Remind!

Text @rpcccon to 81010 or sign up at <https://www.remind.com/join/rpcccon>.

Confirmation 2023

Sundays, October 2, 16, & 30
5:00 p.m., Westminster Room

A new confirmation class is underway! After a brief orientation to the year ahead, the entire class met late last month to kick the year off and get to know each other a little better - a helpful exercise when the class of 15 young people come from 5 different high schools! We will jump in the theological deep end this month with classes in the late afternoon on Sundays October 2, 16, and 30. For classes this year, the entire group will meet at 5 PM in the Westminster Room at church. Together they soon will be wrestling with the core questions of the faith: Who IS God? What is God like? What is that Bible really all about? How can this world both be both so beautiful and such a mess at the same time? Where do I fit in the larger story of what God is up to?

Please keep this year's class in your prayers throughout the coming months!

YOUTH GROUP

High School Youth Group

All 9th - 12th graders are welcome at RPC's High School Youth Group

- **Mondays, October 3 & 17 @ 6:00 p.m., Youth Rooms:** Bring your homework and join us for study hall at the church! We'll provide the snacks and midway study breaks. Juniors and seniors are invited to help out as tutors as well (community service hours will be provided!). Ends at 7:30 p.m.!
- **Sunday, October @ 12:00 p.m., Jay Heritage Center (210 Boston: Post Rd.)** Join us as we partner with Jay Heritage Center in planting, maintaining, and harvesting organic garden beds on Sunday afternoons! All the produce harvested from the beds will be given to Meals on Main St. to distribute to families in need. Parents are welcome to join us as well! Please let Rev. JP (jmarshall@ryepc.com) know if you plan on joining us.
- **Saturday, October 22 @ 10:45 a.m., Boundless Adventures:** Join us for a morning of climbing and team bonding at Boundless Adventures! We'll meet at 10:30 a.m. in the church parking lot and will be back by 2:45 p.m. *Limited to 15 youth.* Cost: \$51 per youth.
- **Sunday, October 23 @ 6:00 p.m., Chapel:** Join us for Vespers, where we invite our high school youth to slow down in the midst of all the busyness for a time of intentional connection and prayer! Let **Rev. JP** (jmarshall@ryepc.com) know beforehand if you plan on joining us for Vespers. Also, if you have a specific concern you would like us to pray for, please feel free to reach out, even if you are unable to attend!

We are on Instagram!

Username: ryepresyouth

Updates through Remind!

Text@ryepre to 81010 or sign up at <https://www.remind.com/join/ryepre>.

Food to Grow On, Thrift Shop, Giving



Food 2 Grow On

@Food2GrowOn · Charity Organization

Food 2 Grow On is one of the community outreach programs that operates out of our All Souls Community Center. This group of people responds to the need of Port Chester children who are experiencing food insecurity. Each week the group packs 225 bags of food that are distributed to three different public schools in Port Chester. If you want to be involved in this “hands on” feeding program you can help by volunteering to pack food. The group meets at the All Souls Community Center (55 Parkway Drive, Port Chester) on Thursdays from 12:30 p.m. to about 1:45 p.m. in the large ground-floor room (Fellowship Hall), which is entered through the back door parking lot. Please be sure to wear a mask. The bagging calendar reflects the Port Chester School calendar; you can email Joanna Nilsen (jniorgan@hotmail.com) if you’d like more information or want to let them know that you will be joining them.



Refurbishing of Chapel Entry Walkway



The RPC Thrift Shop

is now open Thursdays, 10:00 a.m.-1:00 p.m.

Donations: For information on donations, please check the church website (<https://ryepc.com/ministries/thrift-shop/>).

Drop-Off Time: Wednesdays and Thursdays, 10:00-11:30 a.m.

We could use a few more volunteers to help with both our Thursday sales and three evening programs throughout the year. No experience necessary!

Join us in fellowship and help us to help others.

Last year, shop proceeds of \$51,000 were donated to local non-profits.

For more information, please contact:

Suzanne Davies at Suzannebd1@aol.com. Thank you.



Online donation options are available on the RPC Website Giving page (ryepc.com/give/), or you may scan the QR Code to the right with your cell phone.

Zelle We can also accept your donations with Zelle from your mobile banking app.

Please contact the church office to register with us first.

Contact Maida Robinson at 914-967-0842 or email mrobinson@ryepc.com, if you have



Music Notes



by Jason Charneski

Cantata Sunday Slated for December 11; Interested Singers

How glad I am to write that our full Cantata Sunday will resume this year. Mark your calendars for Sunday, December 11, at the 10:00 a.m. service. The Chancel Choir (with soloists from its ranks) and orchestra will offer Part 1 of *Messiah*, Handel's most well-known oratorio.

Persons who are not regular members of the Chancel Choir, yet have interest in and availability to add their voices are welcome to join. We will begin rehearsing the full-choir movements on October 30, within the Chancel Choir's regular Sunday morning rehearsal (beginning at 11:15 a.m.). Please let me know if you'd like to sing!

Smiles All Around at Chapel Organ Dedication Concerts

The new chapel organ was dedicated in worship on September 18. Then, later that morning and that afternoon, David von Behren (a 2016 Knock Scholarship winner), who now is the Assistant Organist and Choirmaster of The Memorial Church at Harvard University, presented a splendid program of music that highlighted the new organ's capabilities. The two photos below point to the smiles and joy all around that day!



This Month and Upcoming Events

Become Part of Our Church Family

NEW MEMBER WELCOME DISCUSSIONS

Perhaps you've been coming to RPC a long time, or perhaps you are brand new to the area or the church. Either way, if you've thought about taking a further step into the life, community, and mission of RPC, this is a great time to explore it. All those who are interested in finding out more about what it means to be a member of the Rye Presbyterian Church are invited to take part in the New Member classes. The classes are Sundays, October 16 and 23 immediately following worship in the church library. Childcare will be available if needed.

In these classes, we will explore what it means to be a Presbyterian in general, and what it means to actively live out our faith together as a part of this particular church. In addition to the Sunday classes, for those choosing to join the church, there will be a meeting with the leadership of the church Sunday evening, November 6, at 7:00 p.m. This is a time to meet the officers of the church and for the Session to meet briefly to approve the new class for church membership. Public welcome and recognition of the new members will take place during worship on Sunday, November 13.

Anyone wishing to find out more about joining the church should contact Peggy Berretta in the church office –

BLESSING OF THE ANIMALS



On the Great Lawn (weather permitting)

Sunday, October 16, at 2:00 p.m.

Special offering to benefit Pet Rescue, Larchmont



COMMUNION WORKSHOP Saturday, November 5, 10:00-11:30 a.m.

The body of Christ? What is that all about?

And what exactly is in that cup??

If your child or children have been curious about the Lord's Supper, this is a great opportunity for children to learn more about it, to be officially welcomed at the communion celebration of the church, and for you to grow in your faith together.

On Saturday, November 5, from 10:00-11:30 a.m., children in the second through fifth grades are welcome to come with a parent to this special workshop. Together we will explore the meaning of the sacrament and how we celebrate it here at Rye Presbyterian.

Space is limited, so please sign up by contacting Rev. Love (dlove@ryepc.com).

PUMPKIN CARVING



Sunday, October 30, 11:15 a.m.-12:30 p.m.,
on the Great Lawn

Join us for our annual Pumpkin Carving and enjoy a fun time filled with delicious pizza, the carving of pumpkins, and great company!

Each family will gather out on the Great Lawn on provided and socially-distanced table cloths with their pumpkins and carving tools. **Comfortable pumpkin-carving clothing is welcome during worship!**

Please register ([click here](#)) starting Monday, October 3, so that we can be sure to have enough food and pumpkins.

Worship, Chancel Flowers



SUNDAY CHANCEL FLOWERS

Each week beautiful flowers adorn our sanctuary and provide an uplifting reminder of the goodness of God. Please consider honoring the memory of a loved one or recognizing a special occasion for a \$70 donation.

The flowers are a blessing to worshippers attending the service live in the sanctuary as well as those attending via ZOOM.

Your donation will be noted in the church bulletin.

To make arrangements, contact Denise LeVan (dlevan@ryepc.com).

Worship in the Sanctuary In Person

As conditions and guidances change, please [click here](#) for updated Covid protocols.

Sunday Services also Online via Live Stream!

Bulletin and instructions on joining via Zoom or YouTube are on the church website:

ryepc.com/worship/worship-at-rpc/



Rev. JP and Pastor Pasquale dropping off Fall Festival food donations. There were tons more donations than this at the Bread of Life Food Pantry.

DIAL IN TO SUNDAY WORSHIP!

To attend worship by using your phone, call 1-646-558-8656 then enter this Meeting ID: 560 770 303

8:30 A.M. WORSHIP UPDATE

Please note that the Worship and Music Committee has decided that 8:30 am worship will be paused for now based upon attendance patterns. The committee will re-evaluate reinstating this service at the beginning of the new year.

Bible Studies, Meetings

BIBLE STUDIES

Men's Bible Study

Sundays, October 2, 16, 30

8:00 p.m. in the Library with Zoom option

All are welcome to join in as we continue our Sunday evening reading of the Acts of the Apostles. We are nearing the end of this particular reading adventure, but new fellow readers are always welcome, especially as we decide where our study will go next! This month we will meet on Sundays, October 3, 16, and 30 at 8:00 PM in the church library with a Zoom option if preferred. If you'd like to be on an email reminder list, let Dan Love know: dlove@ryepc.com.

Monday Morning Bible Discussion

Mondays, October 3, 17, 24, & 31

9:30 a.m., via Zoom

This month, the Monday morning Bible Discussion group continues its thoughtful reading of the Gospel according to Luke. For ease of attendance, we continue to meet most every Monday morning at 9:30 on Zoom, but come when you can! This month we will meet October 3, 17, 24, and 31. If you'd like to be in the email reminder list, let Dan Love know at dlove@ryepc.com.

Women's Bible Study

Saturdays, October 15 & 29,

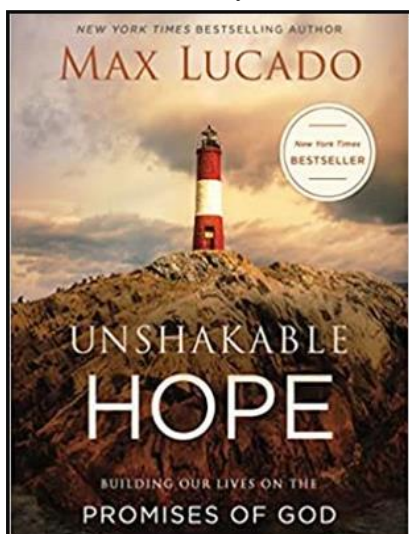
10:00 a.m., via Zoom

For further information, contact Cynthia De Santis (cynthialwells@gmail.com)

Women's Discipleship Group

Tuesdays, 1:00 p.m.,
in the RPC Library and via Zoom

Our study is:



Please e-mail questions to:

Alicia Baldwin (alicia.baldwin@verizon.net) or
Courtney Bennett (Courtneybennett910@gmail.com)

OCTOBER

Church Office Closed on Monday, October 10,
in observance of Columbus Day

Board Meetings

Deacons: Wednesday, Oct. 12, 7:30 p.m., Library / hybrid

Trustees: Wednesday, Oct. 19, 7:30 p.m., Westminster Room

Session: Wednesday, Oct. 26, 7:30 p.m., Westminster Room

Bible Studies

Men's Bible Study: Sundays, Oct. 2, 16, & 30, 8:00 p.m.,
Library with Zoom option

Women's Bible Study: Saturdays, Oct. 15 & 29, 10:00 a.m.,
via Zoom option

Monday Morning Bible Discussion: Mondays, Oct. 3, 17, 24,
& 31, 9:30 a.m., via Zoom

The Path Out of Loneliness, Mondays, Oct. 10, 17, 24 & 31,
7:30 p.m., Library

Soul Shop for Congregations, Sunday, Oct. 23, 11:15 a.m.,
Westminster Room / Hybrid

OR Tuesday, Oct. 25, 7:30 p.m., Library

Youth

Confirmation: Sundays, 6:00 p.m., October 7, 16, & 30,
Westminster Room

Connection: Wednesdays, Oct. 5 & 19, 5:30 p.m.,
Youth Rooms; Friday, Oct. 28, 4:30 p.m., Beta Rock
Climbing, Stamford, CT

High School Youth Group: Mondays, Oct. 3 & 17, 6:00 p.m.,
Youth Rooms, Study Hall; Sunday, Oct. 16, 12:00 p.m.,
Jay Heritage Center; Sunday, Oct. 22, 10:30 a.m.,
Boundless Adventures; Sunday, Oct. 23, 6:00 p.m.,
Chapel, Vespers

Music

Chancel Choir:

Rehearsals: Sundays, 11:15-12:30 p.m., Chapel or Sanctuary

Sunday Warm-Ups and Services: 9:15 a.m. (sing at 10:00
a.m. service).

Other Church Meetings

Blessing of the Animals: Sunday, Oct. 16, 2:00 p.m., on the
Great Lawn

Mission & Outreach: Wednesday, Oct. 5, 7:30 p.m.,
via Zoom.

New Member Classes: Sundays, Oct. 16 & 23,
following worship in the Library

Pumpkin Carving: Sunday, Oct. 30, 11:15 a.m., on the
Great Lawn

Stephen Ministry/Caring Connections: Oct. 4, 11, & 18
7:00 p.m., Westminster Room

Stephen Leaders: Monday, Oct. 17, 7:30 p.m., Conf. Rm.

3Ts: Thursday, 9:50 a.m., Oct. 20, via Zoom

Contact [Jane Mickatavage](mailto:Jane.Mickatavage@ryepc.com) (914-967-8622) or

[Nancy Steed](mailto:Nancy.Steed@ryepc.com) (914-328-9658).

Thrift Shop: 10:00 a.m.

Women's Association: Friday, Oct. 14, 9:30 a.m., Library

Women's Discipleship: Tuesdays, 1:00 p.m., Library
& via Zoom

Rye Presbyterian Nursery School

Greetings to the RPC Community from Kristin Bassett Kumar

If you are interested in joining Rye Presbyterian Nursery School for the 2022-2023 school year, registration will be held online on October 19 and October 20. All current students, new siblings of returning families, and church members should register at this time to guarantee their placement.

All church members are part of our In-House registration. If you are a new family, please email Co-Director Kristin Kumar to set up a tour at:

[Kristin Kumar, at kkumar@rpnskids.org](mailto:kkumar@rpnskids.org)

Rye Presbyterian Nursery School offers morning and afternoon programs for two, three, four, and five year olds. Our morning and afternoon sessions have the same goals and activities at each of their respective age levels.

We look forward to hearing from you soon!



[The Rev. Daniel Love](#), *Co-Pastor*

[The Rev. Dr. John Miller](#), *Co-Pastor*

[The Rev. Jean-Paul Marshall](#), *Associate Pastor for Christian Education*

[Jason Charneski](#), *Director of Music and Organist*

Collin Miller, *Knock Intern in Sacred Music*

[Maida Robinson](#), *Chief Administrative Officer*

[Peggy Berretta](#), *Administrative Assistant*

[Denise LeVan](#), *Pastoral Assistant*

[Juan Velasquez](#), *Head Sexton/Building Manager*

Alonso Osorio, *Sunday Sexton*

Rye Presbyterian Church

882 Boston Post Road, Rye, New York 10580 / Tel: 914.967.0842 / www.ryepc.com